

LBCCD Redistricting Community Forum

Marlene Drinkwine
Vice President, Business Services

December 9, 2021

Goals of Community Forum

- Redistricting process focuses *only* on Long Beach Community College District
- Constructive input
- Robust and respectful conversation
- How to engage in this forum
 - Q&A
 - 3-minute limit on comments

Board of Trustees Terms and Areas

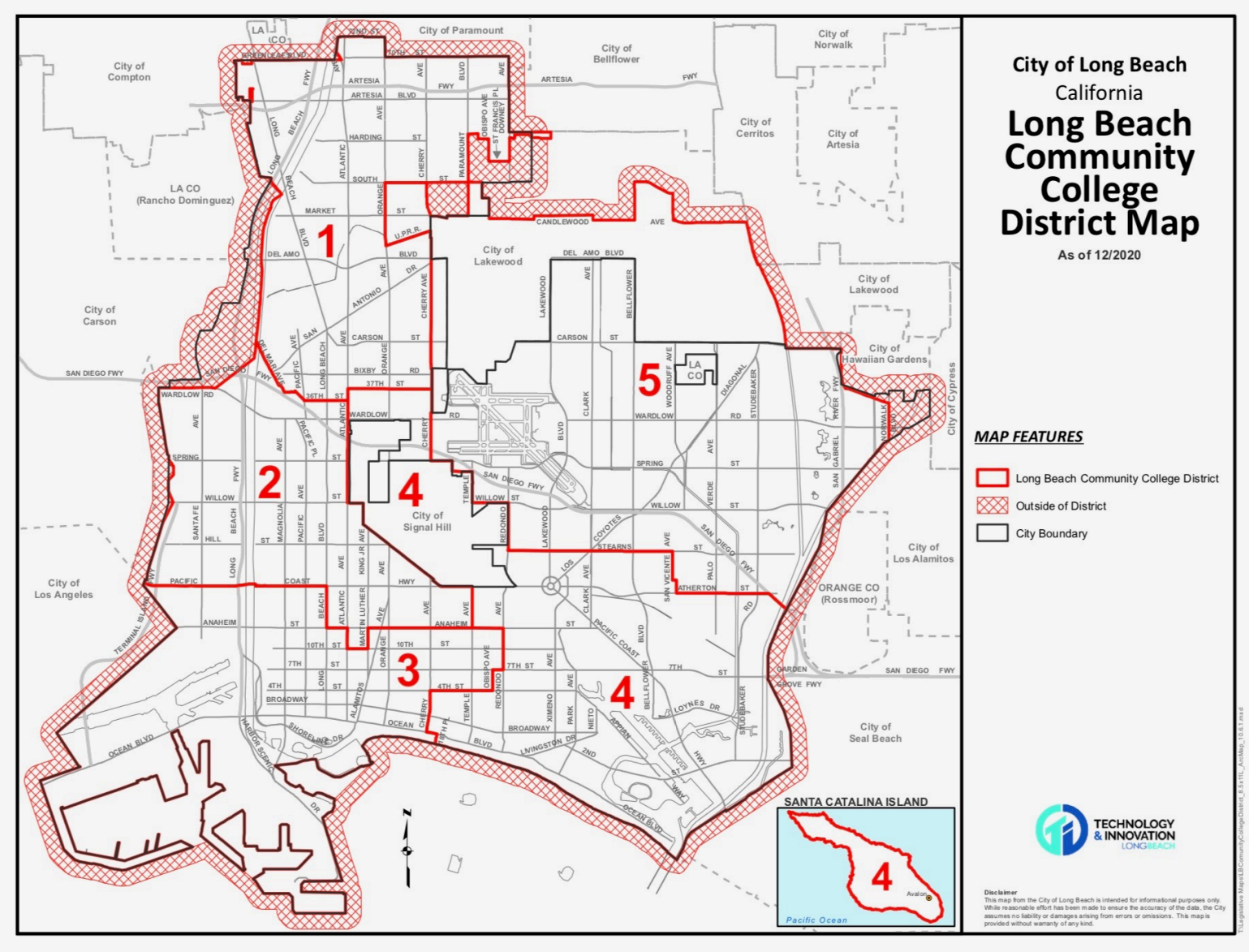
- 1978: LBCCCD Board of Trustees separated from LBUSD, established five-member Board
- 1996: Began electing Trustees by area
- Current:
 - Trustees serve four-year terms
 - Elections staggered to occur in even-numbered years
 - As near as practical, one half of the trustees are elected at each election

Board of Trustees Terms and Areas

Current Trustee Terms and Areas

Name	Area	Term Start	Term End
Uduak-Joe Ntuk	1	July 2018	December 2022
Vivian Malauulu	2	December 2020	December 2024
Sunny Zia	3	July 2018	December 2022
Herlinda Chico	4	December 2020	December 2024
Virginia Baxter	5	July 2018	December 2022

Current Board of Trustees Terms and Areas



Redistricting Process

Must review Trustee areas after each decennial federal census to:

- Reflect population growth
- Ensure equal distribution of the population in each area

LBCCD is currently reviewing 2020 Census data and Trustee areas

Redistricting Timeline

July 28, 2021: [Presentation](#) to the Board of Trustees*

August 25, 2021: [Presentation](#) to the Board of Trustees*

September/October 2021: Release of 2020 Census data; Analysis of the data

October 13, 2021: [Executive Summary](#) update provided to the Board of Trustees*

October 18-31, 2021: Communities of Interest Survey

November 15, 2021: Launched mapping tool on www.lbcc.edu/pod/lbccd-board-redistricting

November 17, 2021: [Draft maps](#) presented to the Board of Trustees* for discussion

**Board of Trustees meetings are open to the public.*

Redistricting Timeline

December 9, 2021: Virtual Community Forum 5:30 p.m.-7:00 p.m.

January 26, 2022: Board of Trustees scheduled to vote on final maps

February 28, 2022: Deadline to submit documents

(Must also be in accordance with LA County Registrar-Recorder's office for November 8, 2022, election timeline for Trustee Areas 1, 3, and 5)

A solid green horizontal bar spanning the width of the page.

Long Beach City College District
2021 Redistricting
Community Outreach



LONG BEACH
CITY COLLEGE

Welcome

Agenda

Things we will cover:

- Redistricting Basics
- Traditional Redistricting Principles
- Communities of Interest
- Public Testimony on Communities of Interest
- Public Hearing Schedule

What is Redistricting

Definition

Redistricting is the process of adjusting district lines every 10 years after the release of the U.S. Census. The well-known examples are Congressional and State Legislative Districts, but local governments also must do redistricting.

- The Long Beach Community College District also must go through this process to ensure the districts are rebalanced after the decennial census.
- Beyond creating districts of equal population, redistricting also serves to empower local communities and preserve voting rights.

Traditional Redistricting Principles

Preventing a District from Becoming a Gerrymander

There are a number of criteria that have been used nationally and upheld by courts.

- Relatively equal size - people, not citizens
- Contiguous – districts should not hop/jump
- Maintain “*communities of interest*”
- Follow city/county/local government lines
- Keep districts compact – appearance/function

Traditional Redistricting Principles

Drawing New Valley Water Districts for Fair Representation

There are a number of criteria that have been used nationally and upheld by courts.

- Relatively equal size - people, not citizens
- Contiguous – districts should not hop/jump
- **Maintain “*communities of interest*”**
- Follow city/county/local government lines
- Keep districts compact – appearance/function

Communities of Interest

Bringing like people together for representation

Communities of interest are the building blocks of districts.

A community of interest includes ethnic and language minorities and other groups.

- Subjective
- Open-ended to be as inclusive as possible

Communities covered by the Voting Rights Act

- Latinos
- Asians
- African Americans

Communities of Interest

Bringing like people together for representation

Communities of interest are the building blocks of districts.

A community of interest includes ethnic and language minorities and other groups.

- Subjective
- Open-ended to be as inclusive as possible

Communities covered by the Voting Rights Act

- Latinos
- Asians
- African Americans

While communities of interest may include race, it cannot be the *predominant factor* in drawing district boundaries.

Communities of Interest

Bringing like people together for representation

- Historical communities
- Economic interests
- Racial composition
- Ethnic Areas
- Cultural amenities
- Religious facilities
- Immigrant communities
- Languages spoken
- Geographic features
- Neighborhoods
- Economic opportunity zones
- Tourism Areas
- School districts
- Outdoor recreation areas
- Communities defined by natural resource features
- Downtown / Urban
- Rural or Agricultural
- Homeowner or Renters
- Creative arts communities
- Media markets
- *Many, many more*

What is NOT a Community of Interest

Preventing a Districting from Becoming a Gerrymander

The Fair Maps Act explicitly prohibits these groups from being considered as communities of interest

- Political party affiliation
- Incumbents
- Political candidates

It also is hard, in redistricting to truly consider:

- *Groups of similarly minded people who do not share a similar geographic location.*
- *Communities of Interest that are countywide.*

Communities of Interest

Three Critical Questions in Defining YOUR Community

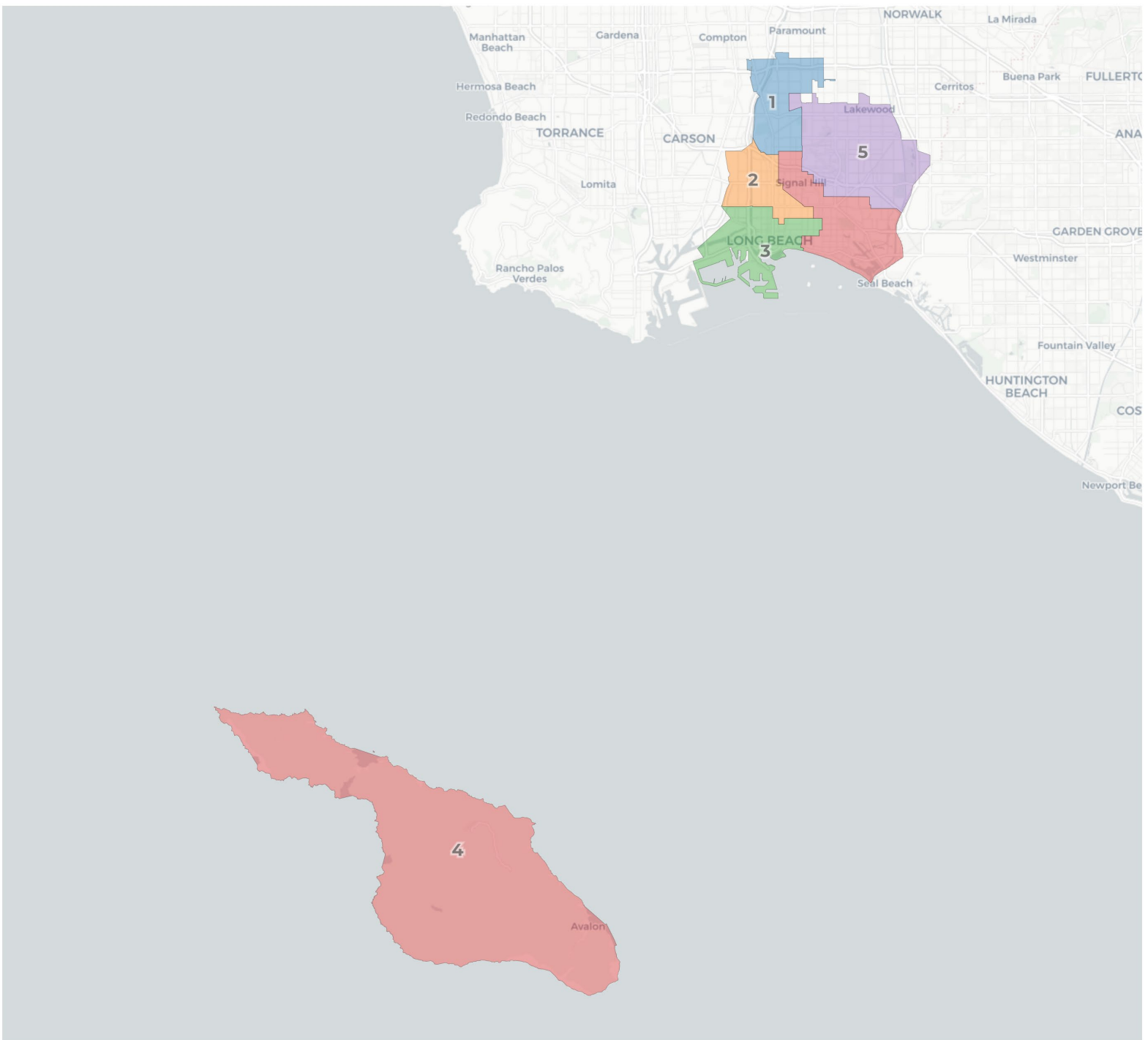
- Does the community have a shared culture, characteristics or bond?
- Is the community geographic in nature? Is the community able to be mapped?
- How would you describe the community's relationship with the jurisdiction, and how is your community affected by the policy decisions made by the elected officials?

Community of Interest Forms

Submitting Your COI Form

- Input can be provided in public hearings or using our Community of Interest Worksheet.
- This can be provided on the website as a part of overall community engagement strategy.
- Some agencies convert these to a webform or survey instrument.





2020 Census

	1	2	3	4	5
Population	105,329	99,709	97,059	107,353	108,964
Deviation	1,646	-3,974	-6,624	3,670	5,281
Deviation %	1.6%	-3.8%	-6.4%	3.5%	5.1%
Other	19,048	12,524	26,597	58,385	56,630
Other %	18.1%	12.6%	27.4%	54.4%	52.0%
Latino	57,834	51,516	48,442	29,526	32,607
Latino %	54.9%	51.7%	49.9%	27.5%	29.9%
Asian	12,137	21,545	8,333	11,670	13,130
Asian %	11.5%	21.6%	8.6%	10.9%	12.0%
Black	16,310	14,124	13,687	7,772	6,597
Black %	15.5%	14.2%	14.1%	7.2%	6.1%

Citizen Voting Age Population (CVAP)

	1	2	3	4	5
Total CVAP	63,488	58,318	59,076	82,332	78,728
Other CVAP	15,456	9,197	22,499	51,020	46,426
Other CVAP %	24.3%	15.8%	38.1%	62.0%	59.0%
Latino CVAP	26,566	22,994	21,082	16,272	17,668
Latino CVAP %	41.8%	39.4%	35.7%	19.8%	22.4%
Asian CVAP	7,963	15,159	5,714	8,889	9,075
Asian CVAP %	12.5%	26.0%	9.7%	10.8%	11.5%
Black CVAP	13,502	10,968	9,780	6,150	5,560
Black CVAP %	21.3%	18.8%	16.6%	7.5%	7.1%

2020 Census

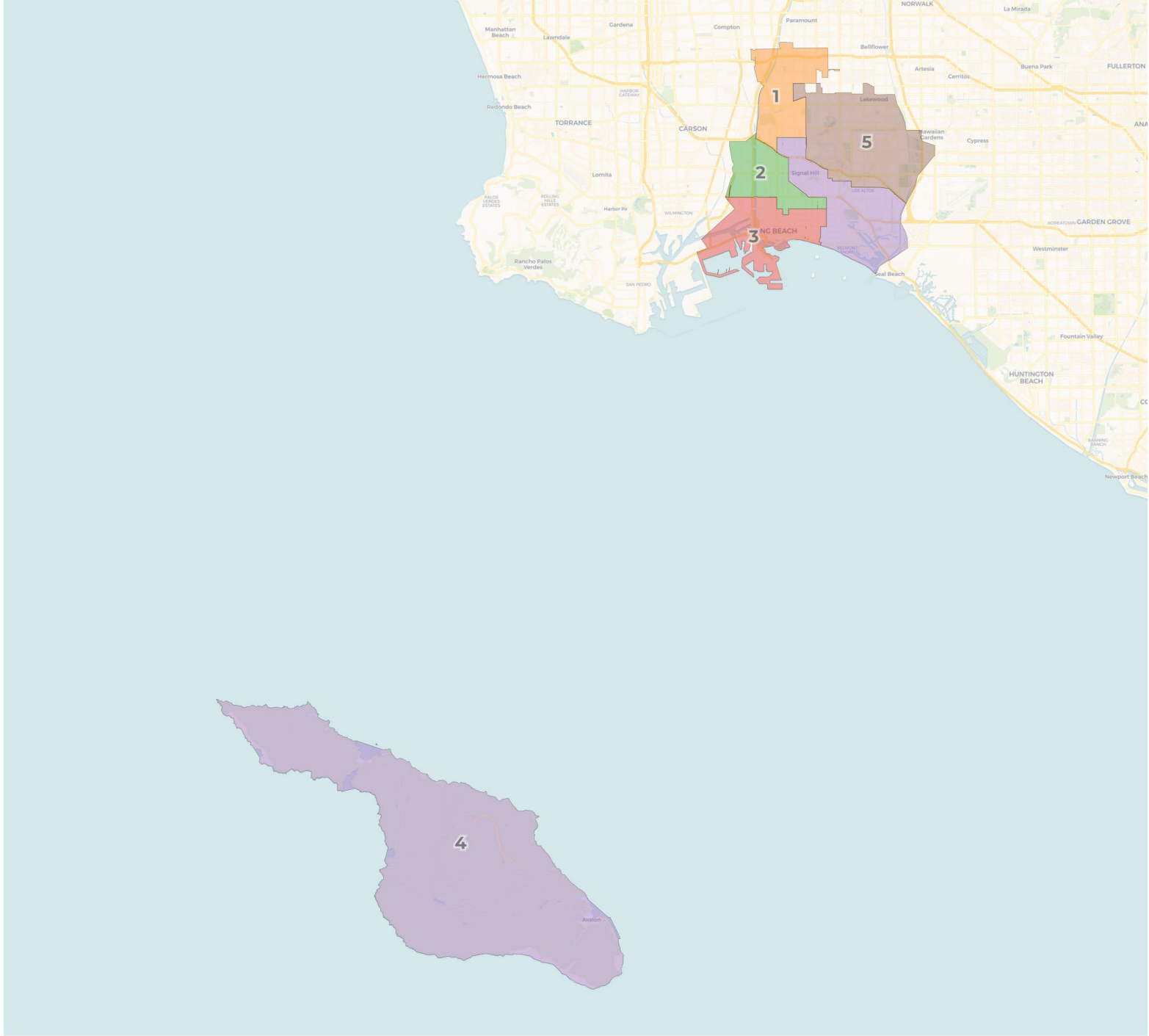
	1	2	3	4	5
Population	105,329	99,709	97,059	107,353	108,964
Deviation	1,646	-3,974	-6,624	3,670	5,281
Deviation %	1.6%	-3.8%	-6.4%	3.5%	5.1%
Other	19,048	12,524	26,597	58,385	56,630
Other %	18.1%	12.6%	27.4%	54.4%	52.0%
Latino	57,834	51,516	48,442	29,526	32,607
Latino %	54.9%	51.7%	49.9%	27.5%	29.9%
Asian				11,670	13,130
Asian %				10.9%	12.0%
Black				7,772	6,597
Black %				7.2%	6.1%

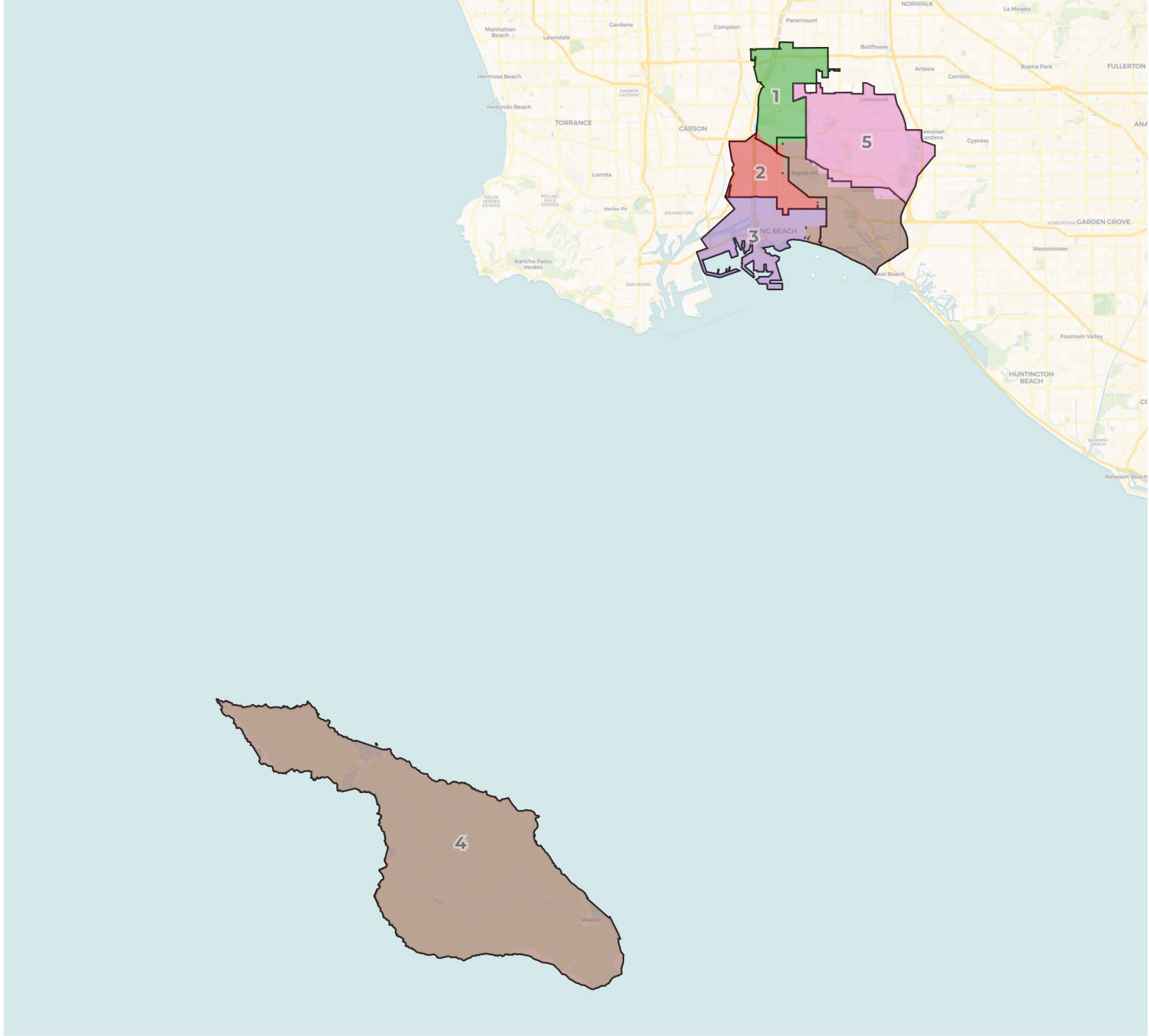
**The total deviation of the plan is the sum of the absolute values of the highest and lowest districts.
Here the plan deviation is 11.5%**

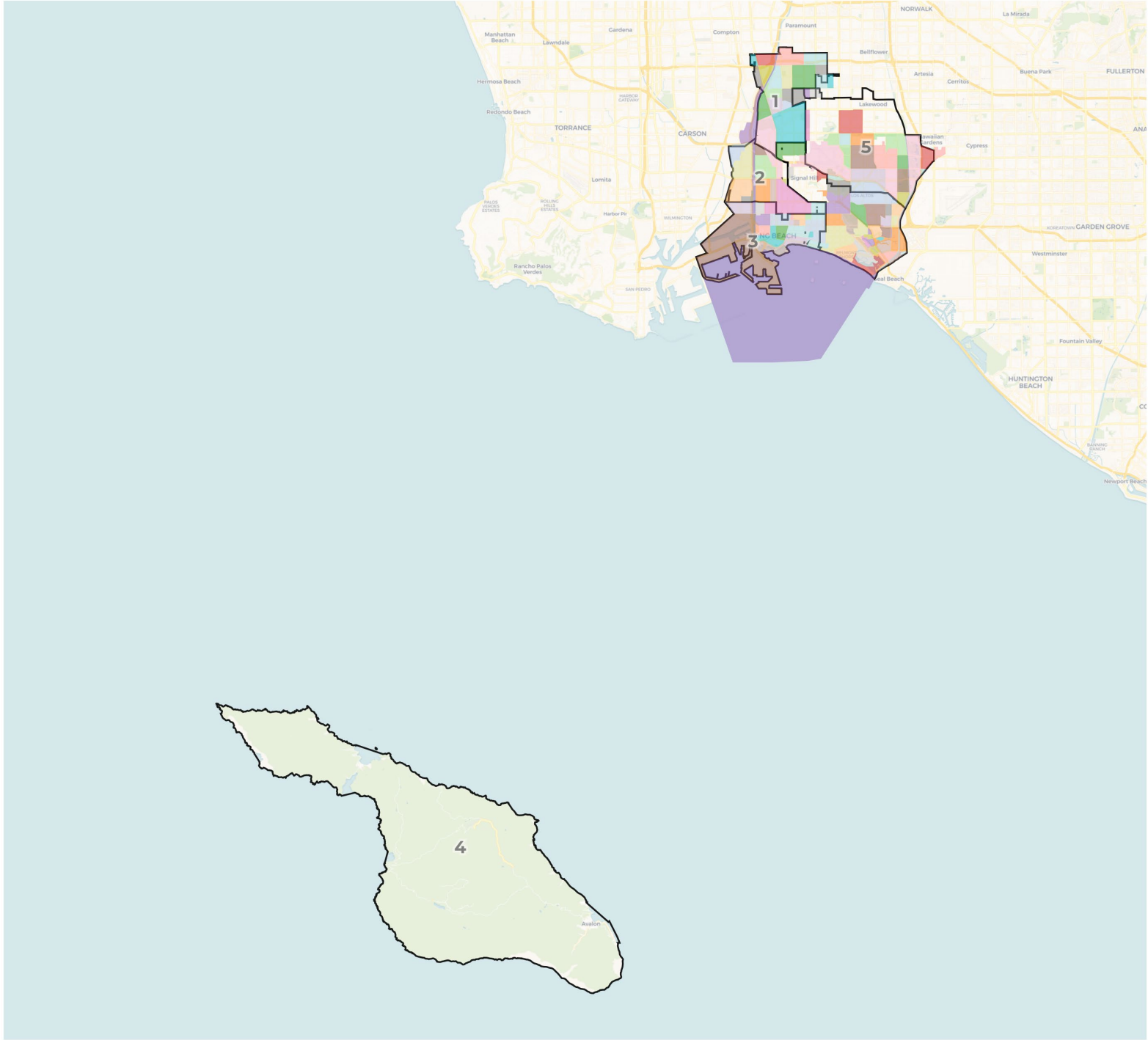
Citizen Voting Age Population (CVAP)

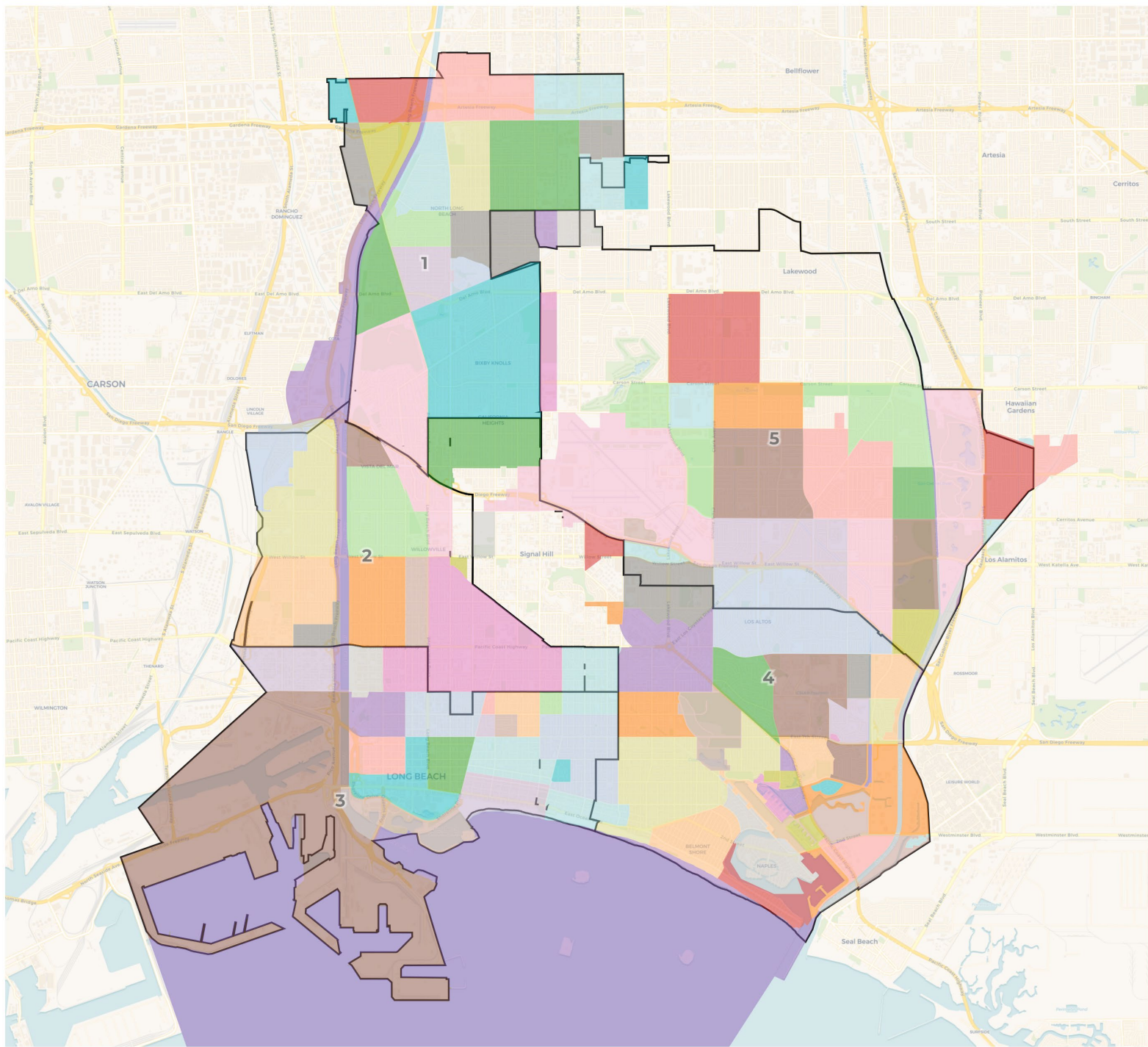
	1	2	3	4	5
Total CVAP	63,488	58,318	59,076	82,332	78,728
Other CVAP	15,456	9,197	22,499	51,020	46,426
Other CVAP %	24.3%	15.8%	38.1%	62.0%	59.0%
Latino CVAP	26,566	22,994	21,082	16,272	17,668
Latino CVAP %	41.8%	39.4%	35.7%	19.8%	22.4%
Asian CVAP	7,963	15,159	5,714	8,889	9,075
Asian CVAP %	12.5%	26.0%	9.7%	10.8%	11.5%
Black CVAP	13,502	10,968	9,780	6,150	5,560
Black CVAP %	21.3%	18.8%	16.6%	7.5%	7.1%

Draft Map Option







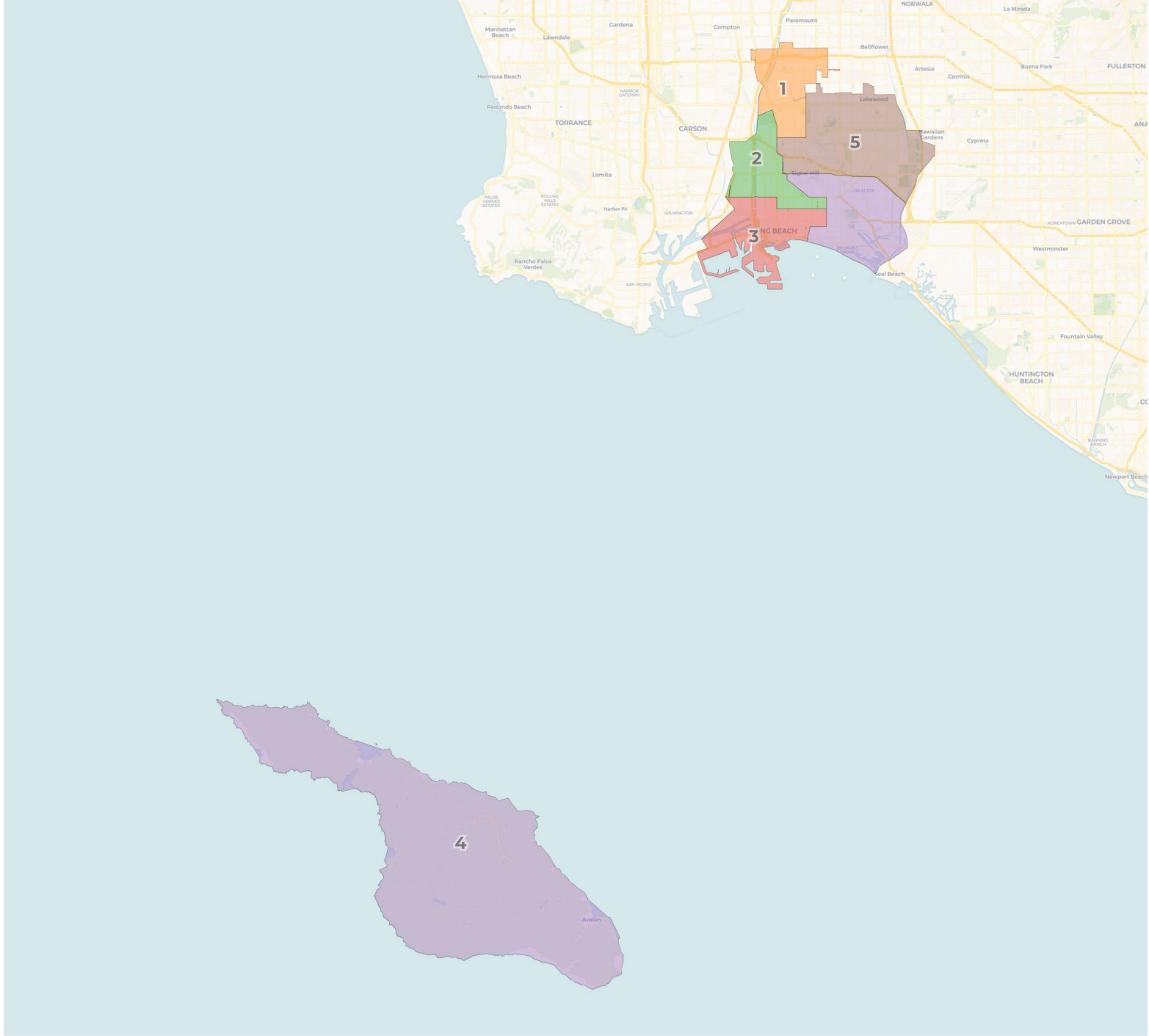


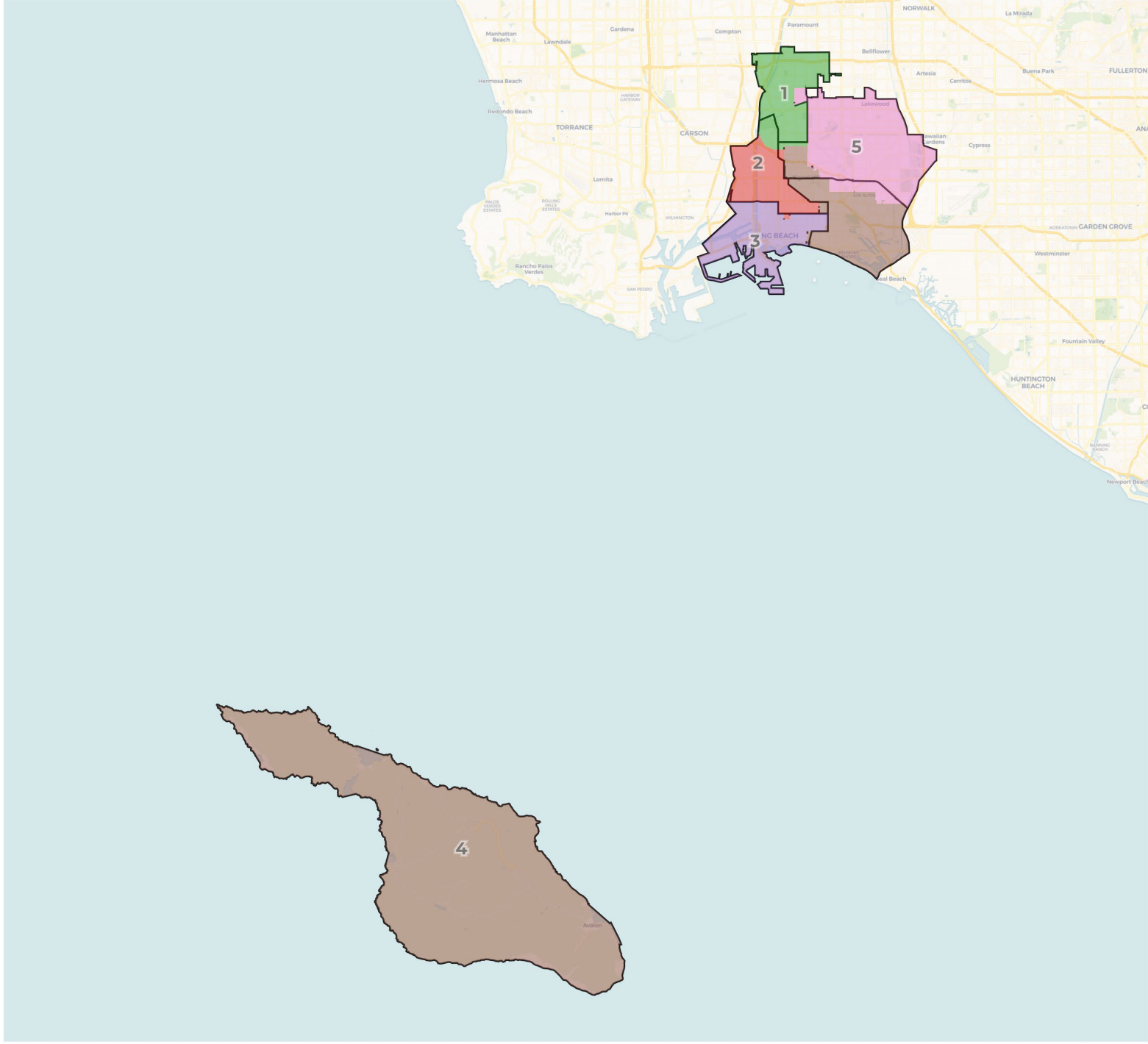
2020 Census

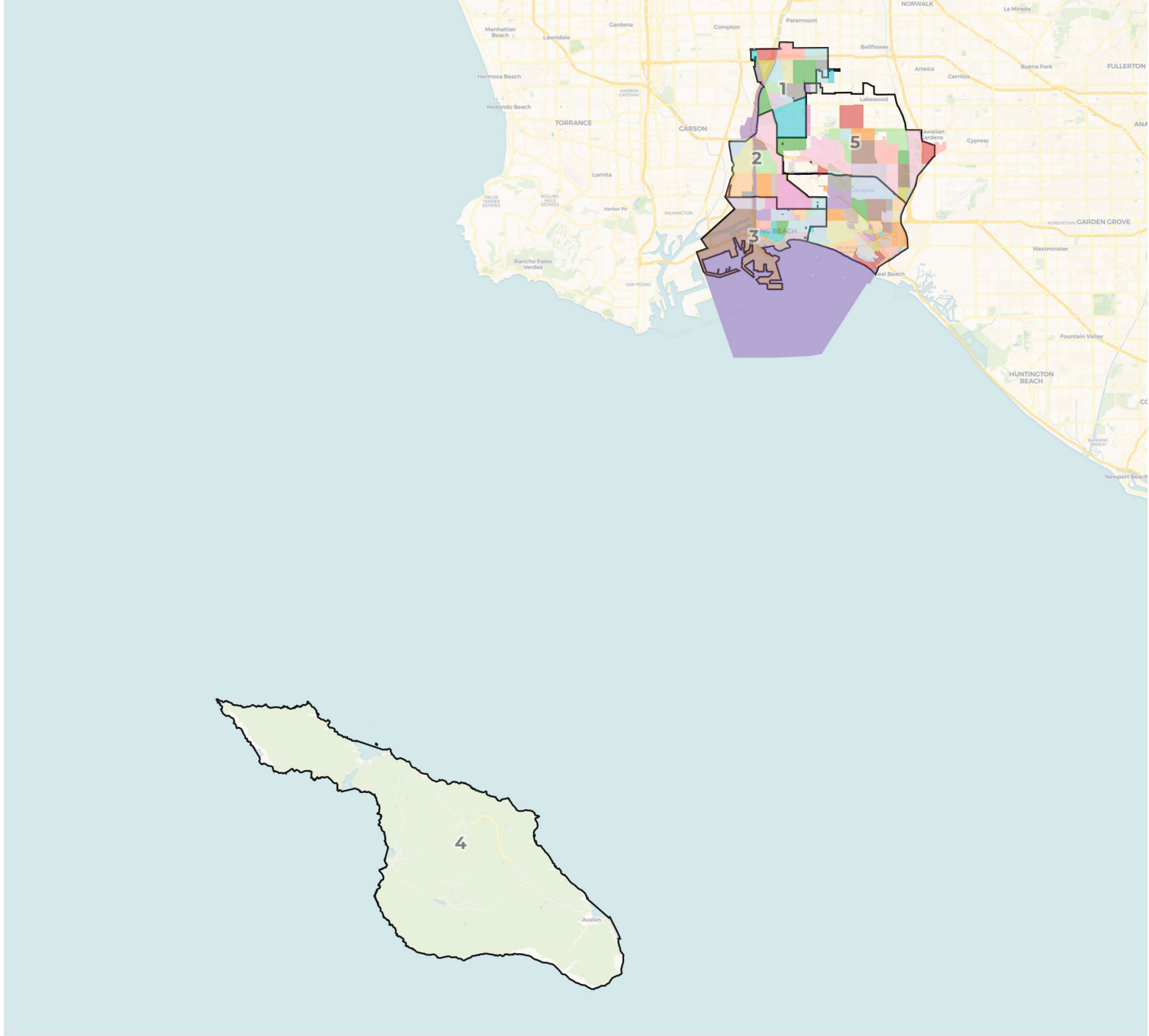
	1	2	3	4	5
Population	103,627	102,424	104,999	103,222	104,137
Deviation	-55	-1,258	1,317	-460	455
Deviation %	-0.1%	-1.2%	1.3%	-0.4%	0.4%
Other	17,973	12,957	31,093	57,568	53,687
Other %	17.3%	12.7%	29.6%	55.8%	51.6%
Latino	57,393	53,217	50,589	27,224	31,285
Latino %	55.4%	52.0%	48.2%	26.4%	30.0%
Asian	12,080	21,702	8,992	11,375	12,708
Asian %	11.7%	21.2%	8.6%	11.0%	12.2%
Black	16,181	14,548	14,325	7,055	6,457
Black %	15.6%	14.2%	13.6%	6.8%	6.2%

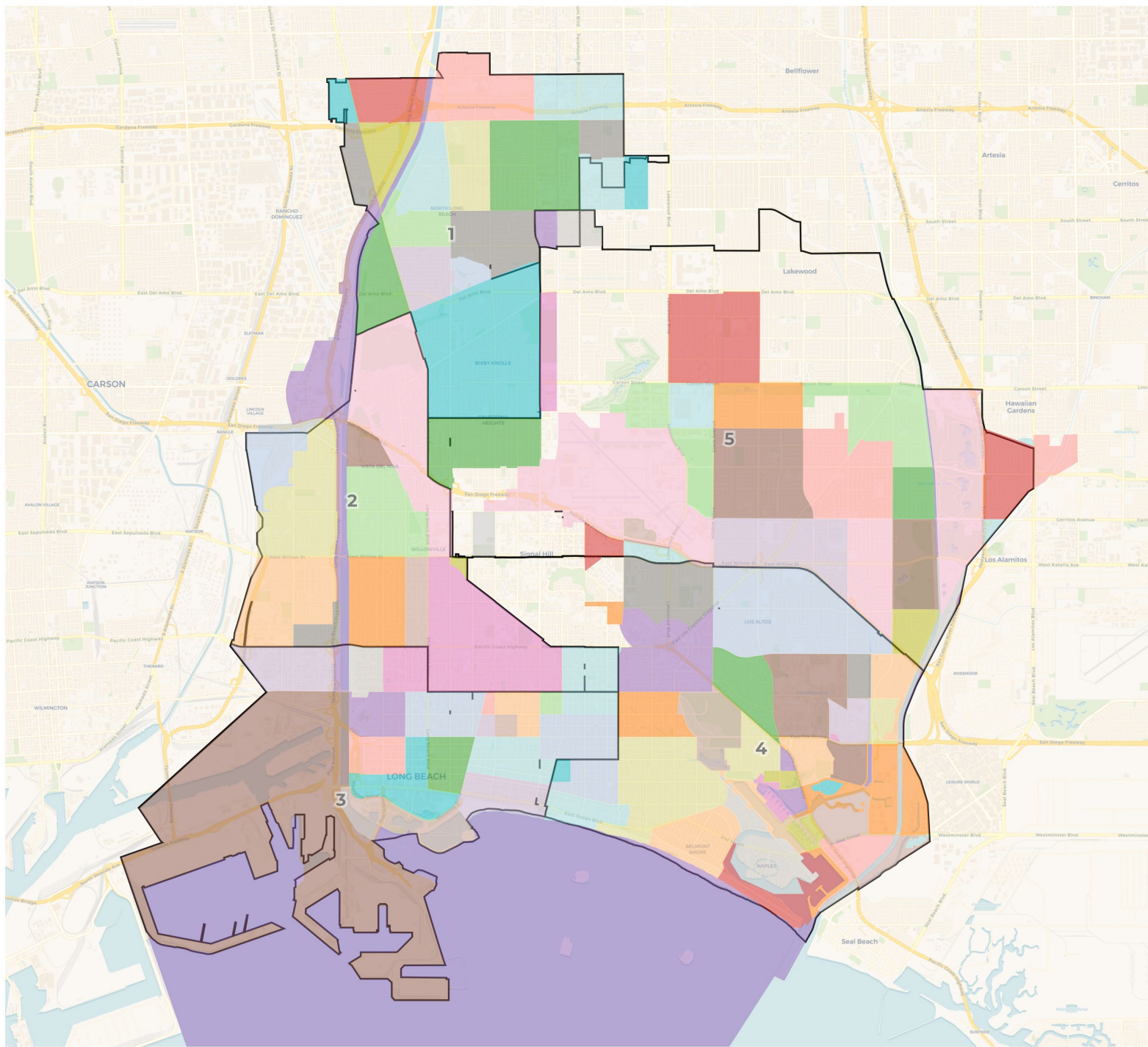
Citizen Voting Age Population (CVAP)

	1	2	3	4	5
Total CVAP	62,867	59,933	67,313	80,907	76,024
Other CVAP	14,489	9,676	26,491	50,438	44,063
Other CVAP %	23.0%	16.1%	39.4%	62.3%	58.0%
Latino CVAP	27,578	24,509	23,068	15,220	17,543
Latino CVAP %	43.9%	40.9%	34.3%	18.8%	23.1%
Asian CVAP	7,788	14,705	6,645	9,154	8,744
Asian CVAP %	12.4%	24.5%	9.9%	11.3%	11.5%
Black CVAP	13,012	11,043	11,109	6,095	5,674
Black CVAP %	20.7%	18.4%	16.5%	7.5%	7.5%







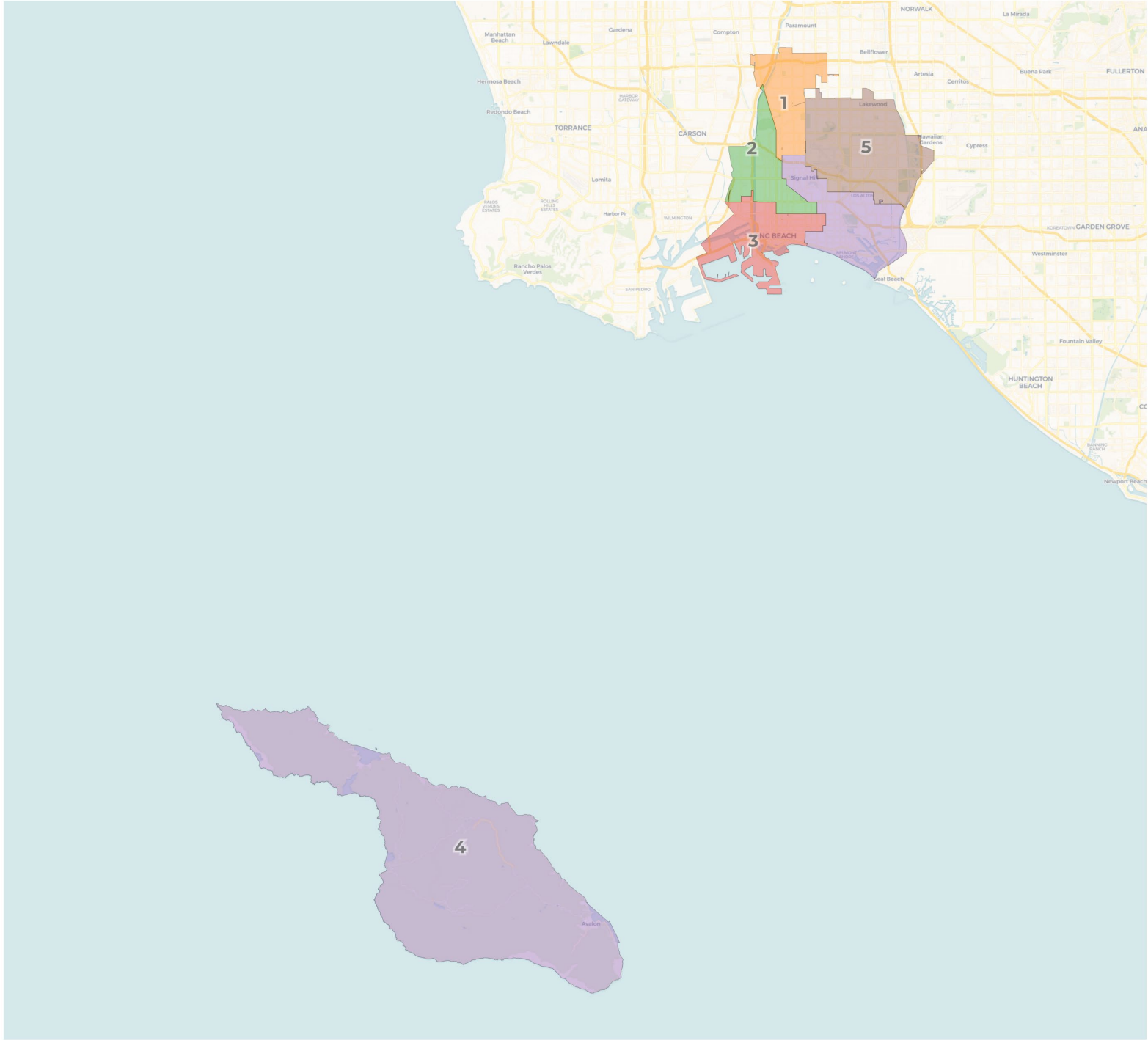


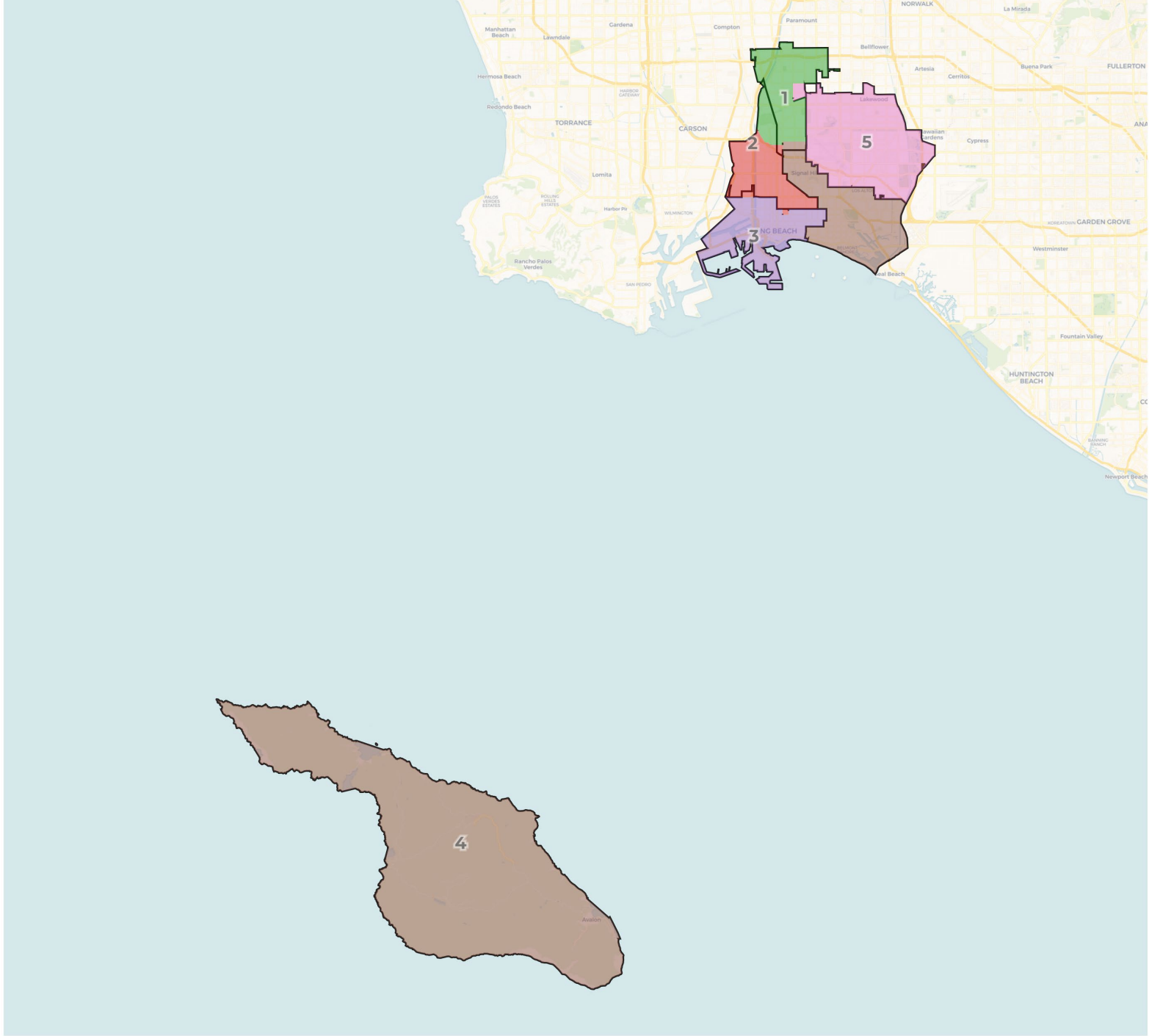
2020 Census

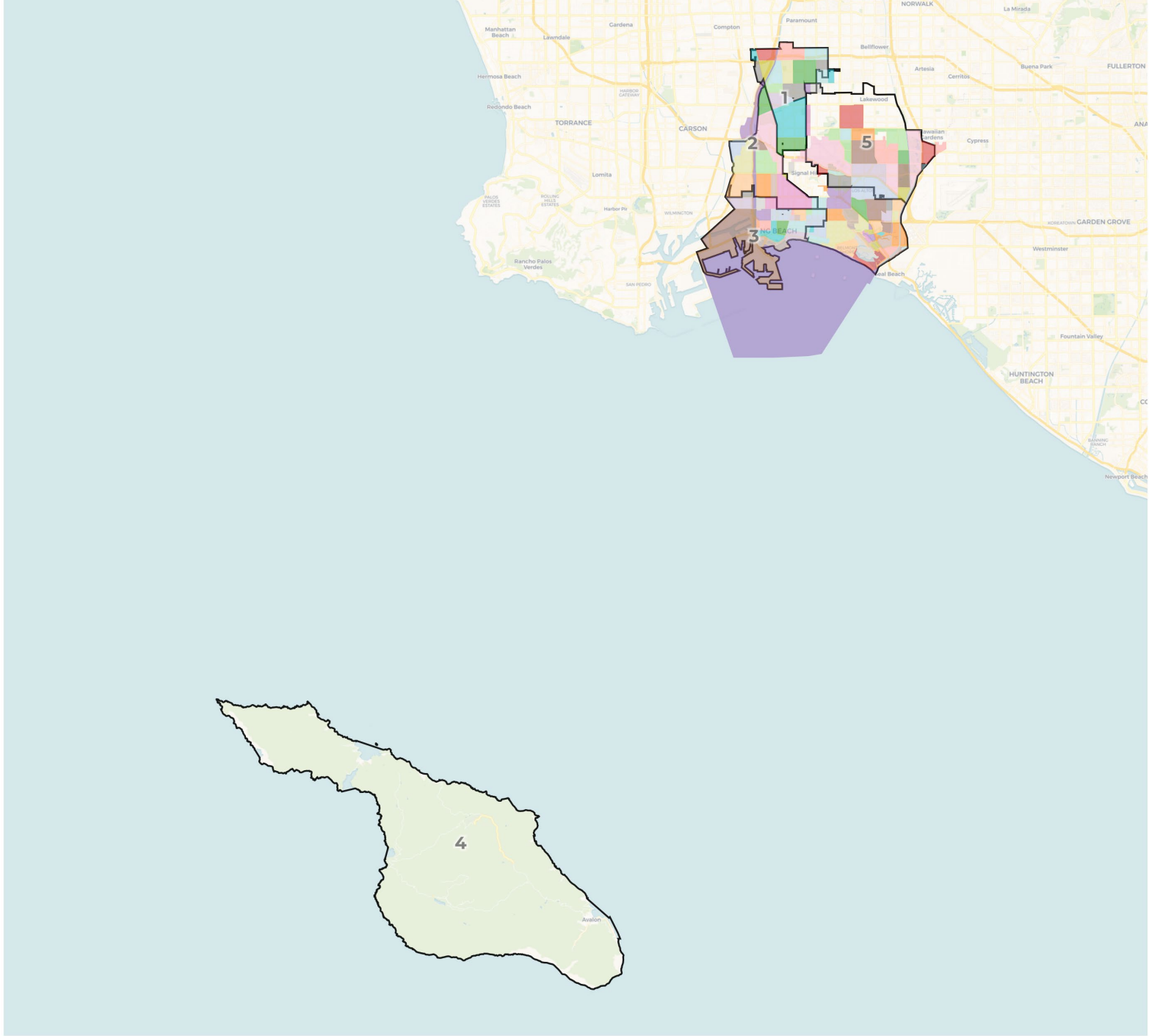
	1	2	3	4	5
Population	103,627	102,424	104,999	103,222	104,137
Deviation	-55	-1,258	1,317	-460	455
Deviation %	-0.1%	-1.2%	1.3%	-0.4%	0.4%
Other	17,973	12,957	31,093	57,568	53,687
Other %	17.3%	12.7%	29.6%	55.8%	51.6%
Latino	57,393	53,217	50,589	27,224	31,285
Latino %	55.4%	52.0%	48.2%	26.4%	30.0%
Asian	12,080	21,702	8,992	11,375	12,708
Asian %	11.7%	21.2%	8.6%	11.0%	12.2%
Black	16,181	14,548	14,325	7,055	6,457
Black %	15.6%	14.2%	13.6%	6.8%	6.2%

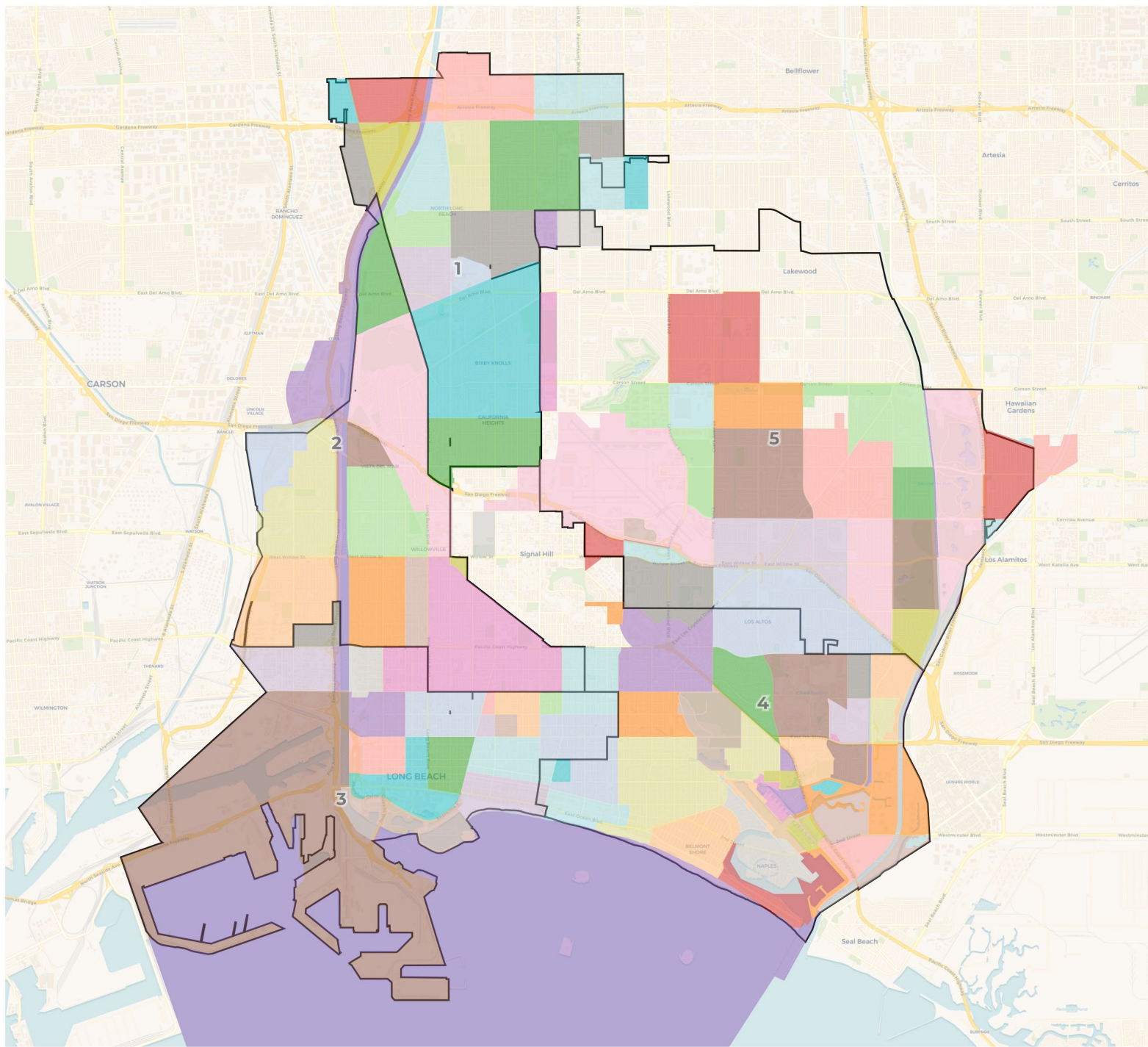
Citizen Voting Age Population (CVAP)

	1	2	3	4	5
Total CVAP	62,867	59,933	67,313	80,907	76,024
Other CVAP	14,489	9,676	26,491	50,438	44,063
Other CVAP %	23.0%	16.1%	39.4%	62.3%	58.0%
Latino CVAP	27,578	24,509	23,068	15,220	17,543
Latino CVAP %	43.9%	40.9%	34.3%	18.8%	23.1%
Asian CVAP	7,788	14,705	6,645	9,154	8,744
Asian CVAP %	12.4%	24.5%	9.9%	11.3%	11.5%
Black CVAP	13,012	11,043	11,109	6,095	5,674
Black CVAP %	20.7%	18.4%	16.5%	7.5%	7.5%









2020 Census

	1	2	3	4	5
Population	105,541	103,284	102,363	103,829	103,364
Deviation	1,865	-392	-1,313	153	-312
Deviation %	1.8%	-0.4%	-1.3%	0.1%	-0.3%
Other	19,068	14,779	27,017	56,593	55,808
Other %	18.1%	14.3%	26.4%	54.5%	54.0%
Latino	57,325	51,883	52,182	28,414	29,900
Latino %	54.3%	50.2%	51.0%	27.4%	28.9%
Asian	12,849	22,041	9,001	11,311	11,645
Asian %	12.2%	21.3%	8.8%	10.9%	11.3%
Black	16,299	14,581	14,163	7,511	6,011
Black %	15.4%	14.1%	13.8%	7.2%	5.8%

Citizen Voting Age Population (CVAP)

	1	2	3	4	5
Total CVAP	64,283	61,707	63,090	81,298	76,647
Other CVAP	15,491	11,145	22,847	49,276	46,385
Other CVAP %	24.1%	18.1%	36.2%	60.6%	60.5%
Latino CVAP	27,247	24,500	23,178	16,176	16,817
Latino CVAP %	42.4%	39.7%	36.7%	19.9%	21.9%
Asian CVAP	8,338	14,797	6,442	9,451	8,002
Asian CVAP %	13.0%	24.0%	10.2%	11.6%	10.4%
Black CVAP	13,207	11,265	10,623	6,395	5,443
Black CVAP %	20.5%	18.3%	16.8%	7.9%	7.1%



REDISTRICTING PARTNERS