

LONG BEACH CITY COLLEGE FEDERAL WORK STUDY (FWS)

The Federal Work Study (FWS) program is a federally-funded aid program that provides on-campus work positions to qualifying LBCC students. Students must meet the financial aid requirements to qualify for a position and can apply by completing the FAFSA application by the priority deadline.

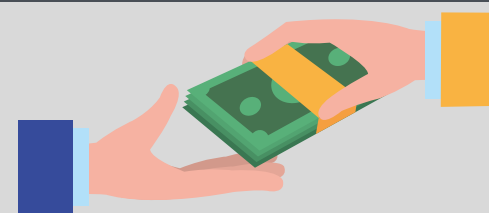
ELIGIBILITY



FWS awards are issued on a first-come, first-served basis. Students must meet the following requirements to be considered for FWS:

1. Meet SAP Standards
2. Minimum 6 unit Enrollment
3. Have sufficient unmet need

PAY RATE & HOURS



FWS Students are allowed to work a maximum of 15 hours per week. Students are not able to work during scheduled class times. Pay rate for new FWS Students is CA Minimum Wage. Second year FWS Students are paid CA Minimum Wage + \$0.75.

APPLICATION PROCESS

FWS Students may apply to any of the hiring departments by reaching out to the supervisor and requesting an interview. Students may also complete a Job Interest Card online at:
<https://forms.office.com/r/v333riTEqX>



RESUME ASSISTANCE

Resume assistance is available at the LBCC Career & Job Center located on both campuses at LBCC.



PCC: LL-206 (562)938-5195

LAC: A-1097 (562)938-4670

Email: careerteam@lbcc.edu

FWS CONTACT INFORMATION

Erika Rodriguez
erodriguez@lbcc.edu
(562)938-4554

Trelton Spencer
tspencer@lbcc.edu
(562) 938-4570