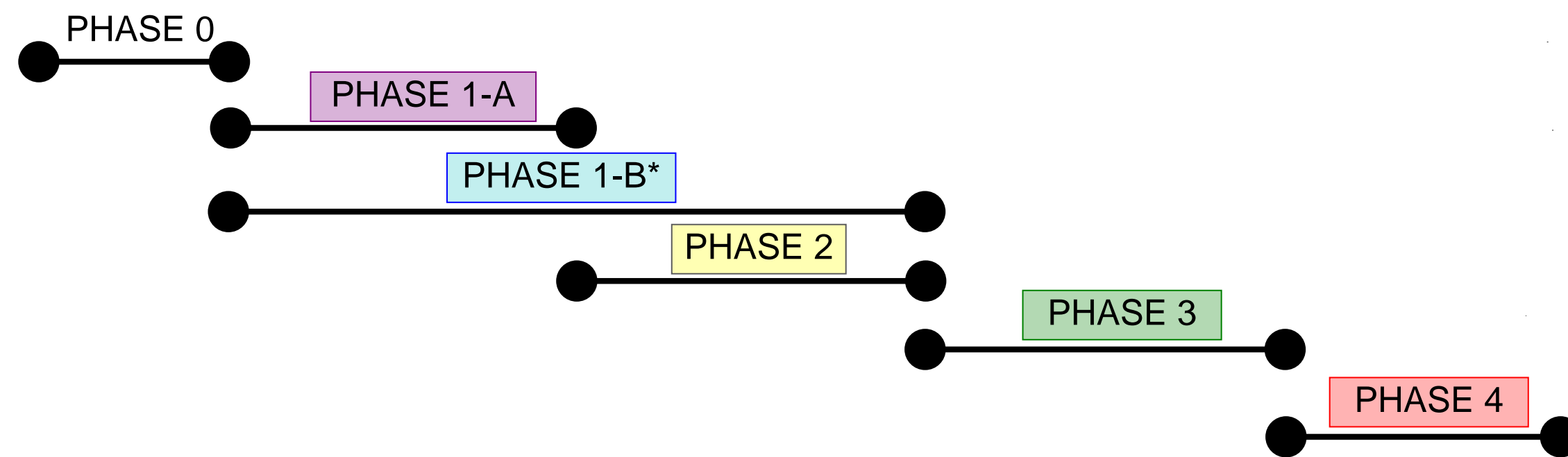


# PACIFIC COAST CAMPUS

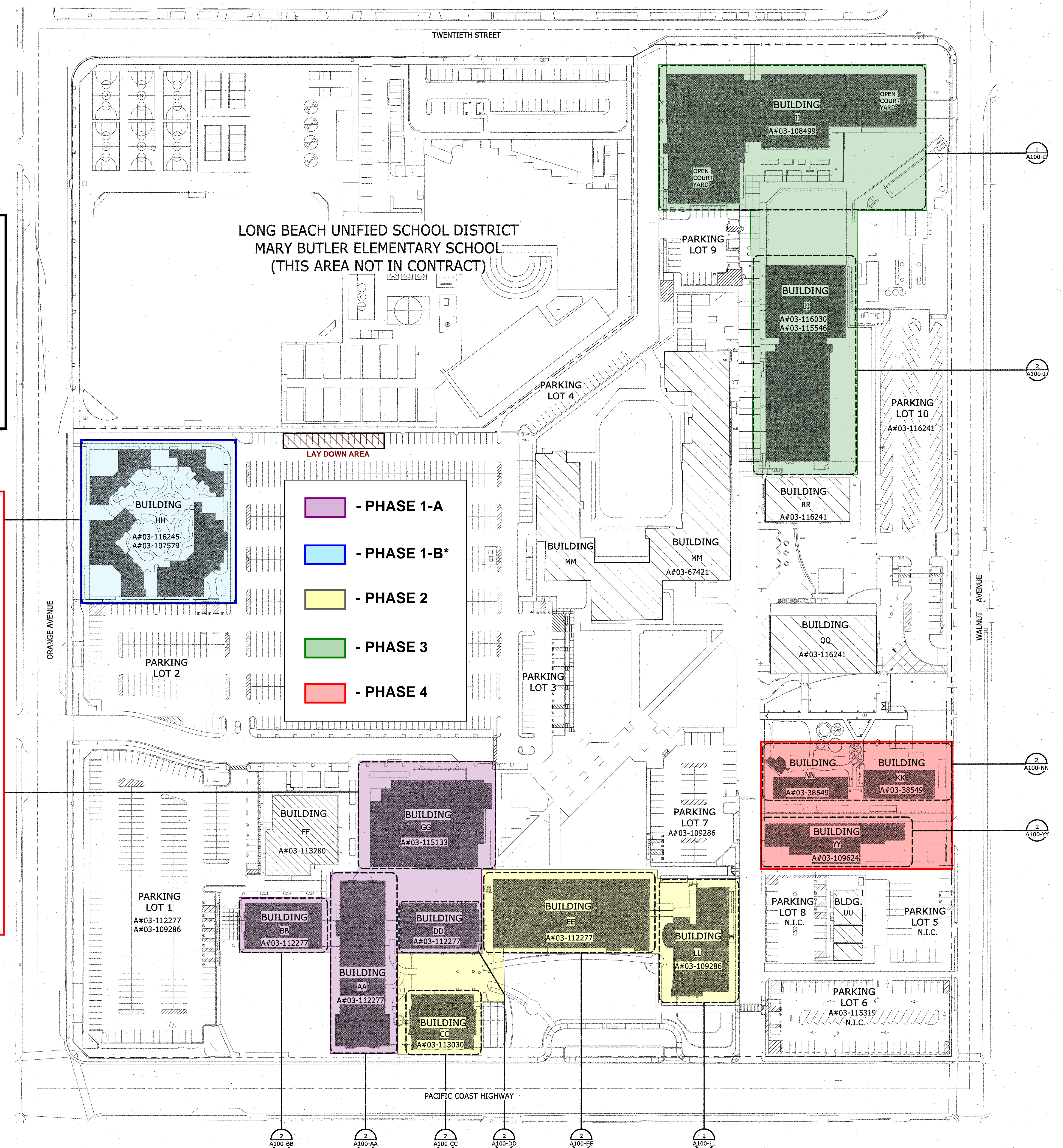
## PHASING PLAN



## LEGEND

- PHASE 1-A**  
Areas Impacted include Buildings AA, BB, DD, and GG.  
**START:** Early September  
**FINISH:** End of January
- PHASE 1-B\***  
Areas Impacted include Buildings HH (Child Development Center)  
**START:** Early September  
**FINISH:** Mid May
- PHASE 2**  
Areas Impacted include Buildings CC, EE, and LL.  
**START:** End of January  
**FINISH:** Mid May
- PHASE 3**  
Areas Impacted include Buildings II and JJ.  
**START:** Mid May  
**FINISH:** Early July
- PHASE 4**  
Areas Impacted include Buildings NN, KK, and YY.  
**START:** Early July  
**FINISH:** Mid August

\* Work to occur between 9 PM and 7 AM or Weekends.





# LEGEND



DOOR HARDWARE

FLEXIBLE - DURING SCHOOL HOURS



DOOR CLOSER

FLEXIBLE - DURING SCHOOL HOURS



SPECIALTY

OFF HOURS/BREAKS



CONCRETE/FLOORING

OFF HOURS/BREAKS



FLOOR MAT

OFF HOURS/BREAKS



DOOR KICK  
PLATE

FLEXIBLE - DURING SCHOOL HOURS



SIGNAGE

FLEXIBLE - DURING SCHOOL HOURS



TOILET  
ACCESSORIES

FLEXIBLE - DURING SCHOOL HOURS. WORK  
INSIDE RESTROOMS TO BE COORDINATED  
INDIVIDUALLY. SHUT DOWN REQUIRED.



FIRE ALARM

OFF HOURS/BREAKS

## **GENERAL NOTES:**

1. ALL FIRE ALARM WORK TO BE PERFORMED BY SIMPLEX AS A PROPRIETARY SYSTEM. THE GENERAL CONTRACTOR SHALL BE RESPONSIBLE FOR RE-TESTING AND CERTIFYING THE FIRE ALARM SYSTEM UPON NEW WORK COMPLETION. THE BUILDING WILL NEED TO BE ON FIRE WATCH DURING ALL TIMES IN WHICH THE FIRE ALARM SYSTEM IS OFF-LINE. THE GENERAL CONTRACTOR SHALL COORDINATE WITH DISTRICT FOR DISABLING AND TESTING.

2. ALL WORK AREAS ARE TO BE CLEANED AND ACCESSIBLE PRIOR TO THE START OF THE SCHOOL DAY AT 7:00AM.



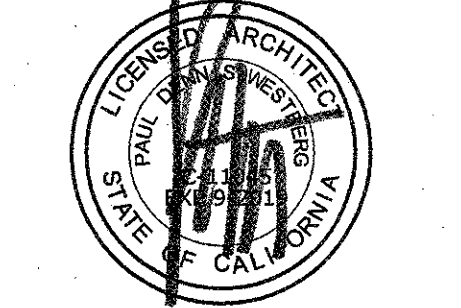
CONSULTANT:

PROJECT NAME:

**Long Beach City College - Barrier Removal**  
**Pacific Coast Campus - Barrier Removal**  
1305 E. Pacific Coast Hwy.,  
Long Beach, California 90806

CLIENT: **LONG BEACH COMMUNITY COLLEGE DISTRICT**  
4901 E. Carson St., Long Beach, California 90806

JOB NO: 16023  
DATE: 02/20/2018  
DRAWN: RR / AN  
CHECK: JG  
ARCHITECT: PDW  
ENGINEER:  
ARCHITECT:



CONSULTANT:

STATE:  
IDENTIFICATION STAMP  
DIV. OF THE STATE ARCHITECT  
OFFICE OF REGULATION SERVICES  
APP NO: 03-118408  
FILE NO: 19-C3  
AC: [initials] FLS: [initials] SS: [initials]  
DATE: FEB 20 2018

SHEET DESCRIPTION:  
DEMOLITION/RENOVATED  
FIRST FLOOR PLAN

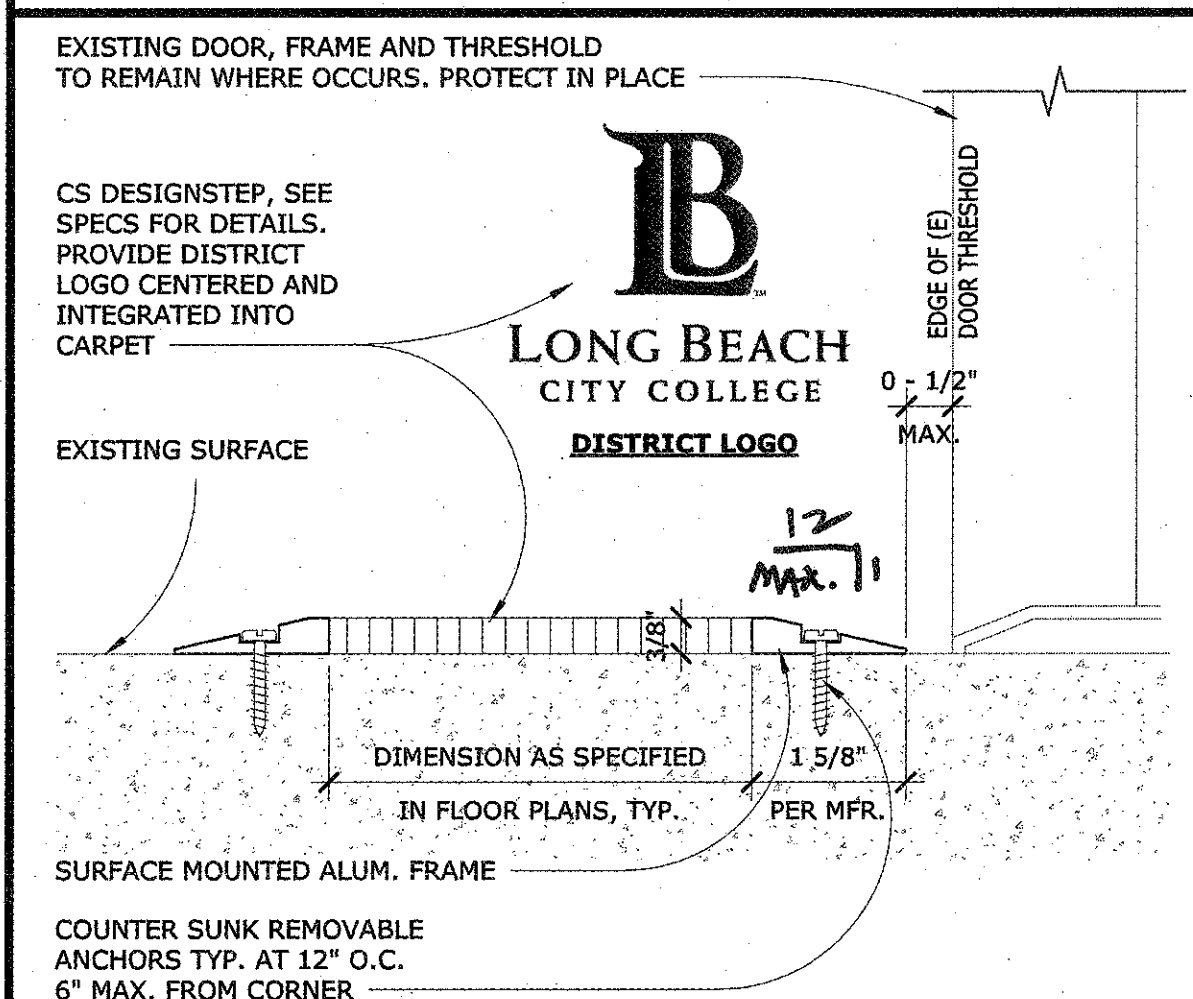
SHEET NO:

A100-AA

- BD001 CAREFULLY REMOVE (E) ROOM EXIT SIGNAGE. DOCUMENT (E) SIGNAGE VERBAGE TO BE USED IN KIND ON (N) SIGNAGE PER RENOVATION PLANS. PREPARE (E) WALL SURFACE FOR RELOCATION PER RENOVATION PLANS. CAREFULLY REMOVE (E) DOOR/ROOM SIGNAGE. PREPARE (E) WALL OR DOOR SURFACE FOR RENOVATION PLANS.
- BD002 VERIFY AND ADJUST (E) DOOR CLOSERS TO COMPLY WITH 5 LBS. MAX. FORCE AND CLOSING SPEED REQ'D TO OPERATE PER CODE. WHERE CLOSER IS NOT ADJUSTABLE REPLACE CLOSER AS REQUIRED PER FLOOR PLAN GENERAL NOTES #7.
- BD006 CAREFULLY REMOVE AND SALVAGE (E) PAPER TOWEL DISPENSER. PATCH AND REPAIR WALL SURFACE TO MATCH SURROUNDING AREA. IF A TRASH CONTAINER EXIST BELOW THE DISPENSER RETURN IT TO THE DISTRICT.
- BD008 REMOVE (E) FLOOR MAT.
- BD009 CAREFULLY REMOVE (E) ACOUSTICAL SEAL AND KICK PLATE WHERE OCCURS AT BASE OF DOOR. RETURN TO DISTRICT.
- BD034 REMOVE (E) WARNING STRIPING.
- BD038 CAREFULLY REMOVE AND SALVAGE (E) SOAP DISPENSER. SAVE FOR RE-INSTALLATION. PREPARE (E) WALL SURFACE FOR RELOCATION PER RENOVATION PLANS.
- BD050 CAREFULLY REMOVE (E) NON-COMPLIANT EXIT ROUTE SIGNAGE. PREPARE (E) WALL SURFACE FOR RELOCATION PER RENOVATION PLANS.

- BD078 REMOVE (E) FLOOR FINISH AT JOINT AND GRIND (E) CONCRETE FLOOR SURFACE 4.9% MAX. SLOPE IN DIRECTION OF TRAVEL. VERIFY NON COMPLIANT SLOPE LOCATION IN FIELD.
- BN001 INSTALL (N) ROOM EXIT SIGNAGE. SEE ROOM SIGNAGE DETAIL 13E/A800. PATCH, REPAIR AND PAINT ALL ADJACENT AFFECTED SURFACES TO MATCH (E).
- BN002 RE-INSTALL (E) DOOR/ROOM SIGNAGE. SEE ROOM SIGNAGE DETAIL 13/A800. PATCH, REPAIR AND PAINT ALL ADJACENT AFFECTED SURFACES TO MATCH (E). IF SIGN IS DAMAGED OR NOT RE-USABLE REPLACE PER KEYNOTE BN002.
- BN023 PROVIDE (N) WALK OFF MAT. SEE SIZE ADJACENT TO KEYNOTE TAG AND DETAIL 3/A100-AA.
- BN024 INSTALL (N) 12" TALL KICK PLATE AT BASE OF DOOR TO BE LOCATED ON THE "PUSH SIDE" OF DOOR. KICK PLATE TO EXTEND FULL WIDTH OF DOOR. SEE DETAIL 20/A801.
- BN037 RE-INSTALL (E) SALVAGED SOAP DISPENSER. SEE 1D/A800 FOR MOUNTING HEIGHT REQUIREMENTS. WHERE AN (E) BACKSLASH INTERFERES WITH THE REQUIRED HEIGHT, PROVIDE A NOTCH IN THE (E) BACKSLASH TO APPLY THE CORRECT DISPENSER HEIGHT. PATCH, REPAIR AND PAINT ALL ADJACENT AFFECTED SURFACES TO MATCH (E).
- BN045 RE-INSTALL (E) SALVAGED PAPER TOWEL DISPENSER. SEE 1D/A800 FOR MOUNTING HEIGHT REQUIREMENTS. PATCH, REPAIR AND PAINT ALL ADJACENT AFFECTED SURFACES TO MATCH (E).
- BN047 INSTALL (N) EXIT ROUTE SIGNAGE. SEE ROOM SIGNAGE DETAIL 13B/A800. PATCH, REPAIR AND PAINT ALL ADJACENT AFFECTED SURFACES TO MATCH (E).
- BN052 INSTALL (N) CONTRASTING WARNING STRIPS AT TOP STEP AND BOTTOM STEP OF STAIRS SEE DETAIL 5/A800.
- BN089 GRIND (E) CONCRETE FLOOR SURFACE 4.9% MAX. SLOPE IN DIRECTION OF TRAVEL. VERIFY NON COMPLIANT SLOPE LOCATION IN FIELD. REPLACE FLOORING TO MATCH ADJACENT FLOORING TYPE IN KIND.

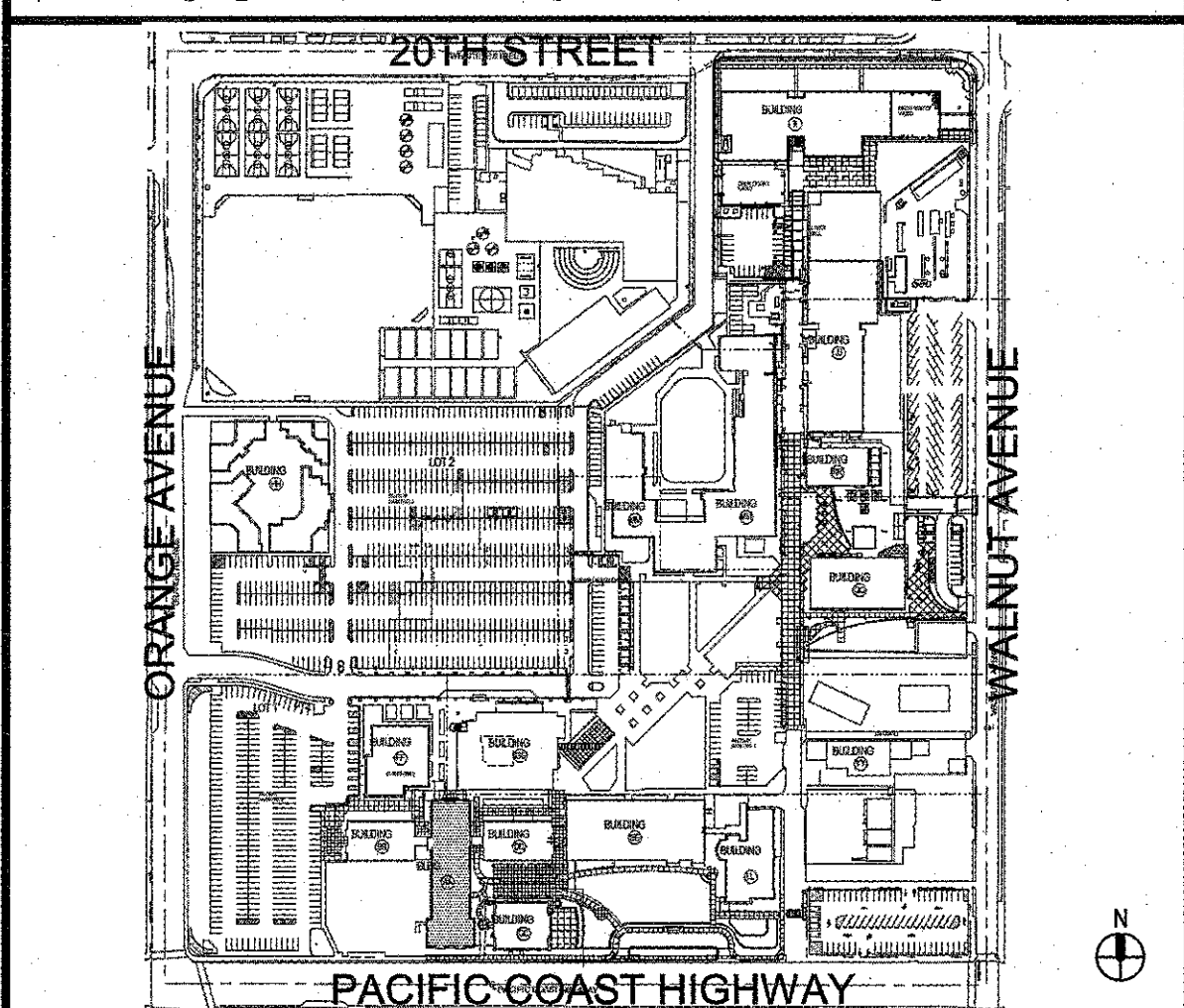
**KEYNOTES**



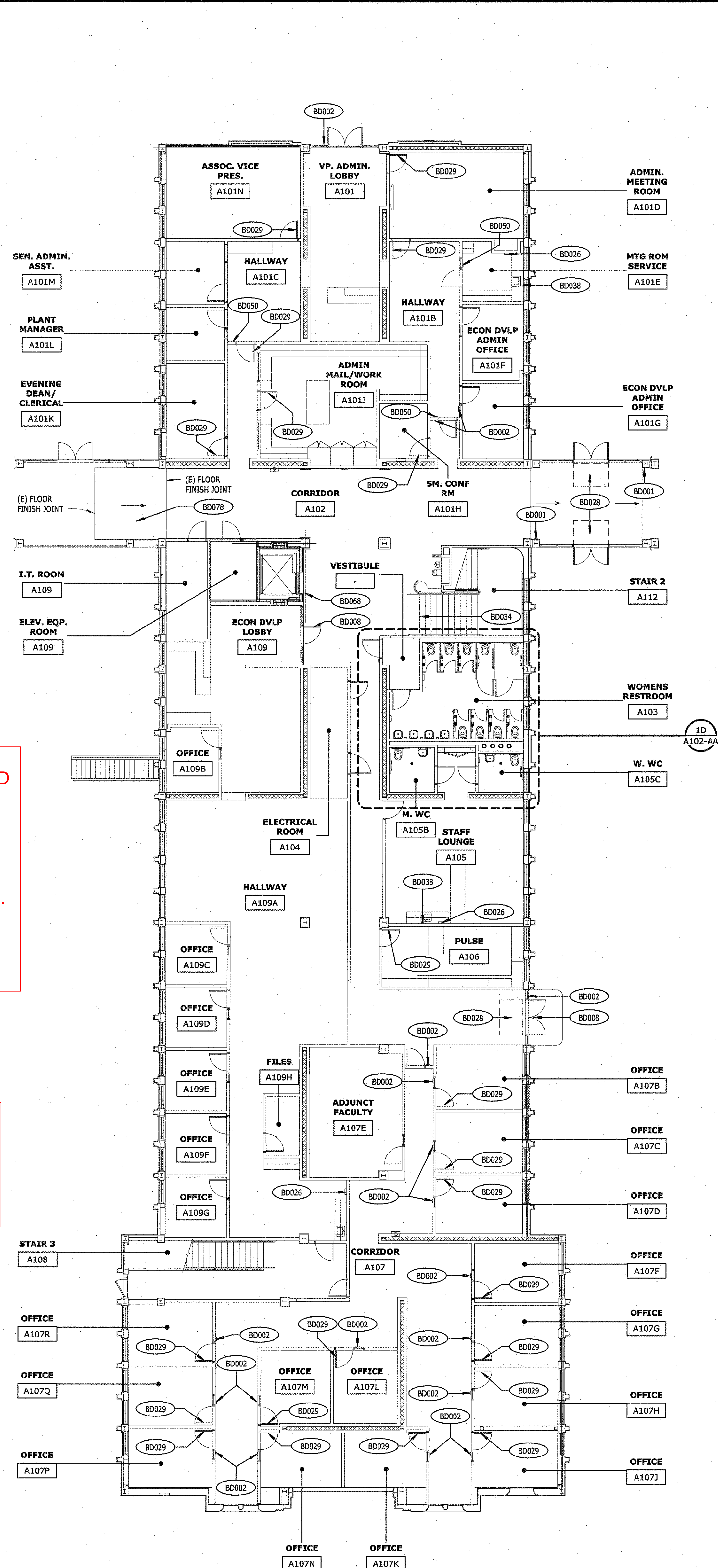
**TRANSITION AT WALK OFF MAT** 6" = 1'-0" 3

- FOR TYPICAL SYMBOLS AND ABBREVIATIONS, SEE SHEET G001.
- ALL GYPSUM BOARD SHALL BE 5/8" THICK TYPE "X" (U.N.O.).
- PROVIDE FIRE-RESISTANT SEALANT MATERIAL AT ALL PENETRATIONS THROUGH FIRE WALLS, FIRE BARRIERS, CORRIDOR WALLS AND RATED HORIZONTAL ASSEMBLIES.
- ALL DIMENSIONS TO WALLS ARE TO FACE OF EXISTING FINISH U.O.
- PROTECT AND SAFEGUARD FROM DAMAGE ALL EXISTING FINISHES AND WORK TO REMAIN.
- FOR TYPICAL ROOM SIGNAGE DETAILS SEE 13/A800.
- WHERE DOOR CLOSERS ARE TO BE REPLACED THE NEW MODEL SHALL BE:  
**LCN 4040XP SERIES:**  
- REGULAR OR PARALLEL ARM AS REQUIRED V.I.F.  
- PROVIDE REGULAR ARM FOR CLOSERS MOUNTED ON PULL SIDE (HINGE) OF DOOR.  
- PROVIDE SPRING CUSH ARM (CUSH) FOR CLOSERS MOUNTED ON PUSH SIDE (PARALLEL ARM) OF DOOR.  
- PROVIDE MOUNTING ACCESSORIES AS REQUIRED TO COMPLETE INSTALLATION.  
- MATCH MOUNTING CONDITION OF EXISTING CLOSER BEING REPLACED.
- CONTRACTOR TO VERIFY ALL MANUAL FIRE ALARM PULL STATIONS MEET THE HEIGHT REQUIREMENTS OF 1E/A800. LOWER ALL EXISTING MANUAL FIRE ALARM PULL STATIONS AS REQUIRED.

**FLOOR PLAN GENERAL NOTES**



KEYMAP





CONSULTANT:

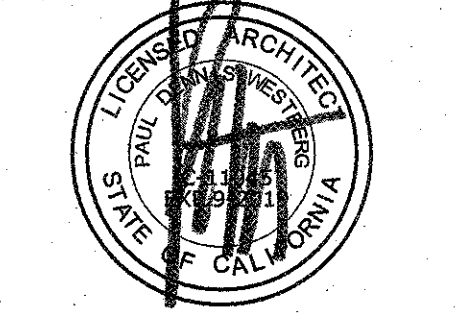
PROJECT NAME:

Long Beach City College  
Pacific Coast Campus - Barrier Removal  
1305 E. Pacific Coast Hwy.,  
Long Beach, California 90806

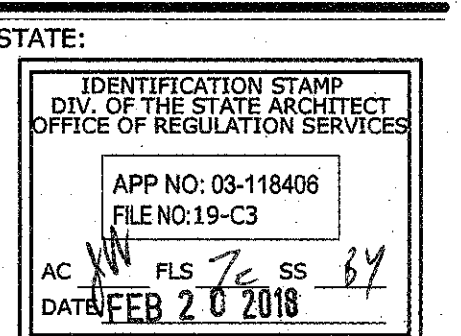
CLIENT: LONG BEACH  
COMMUNITY COLLEGE  
DISTRICT  
4901 E. Carson St., Long  
Beach, California 90806

Rev. Date	Description

JOB NO: 16023  
DATE: 02/20/2018  
DRAWN: RR / AN  
CHECK: JG  
ARCHITECT: PDW  
ENGINEER:  
ARCHITECT:



CONSULTANT:



SHEET DESCRIPTION:  
DEMOLITION/RENOVATED  
SECOND FLOOR PLAN

SHEET NO:

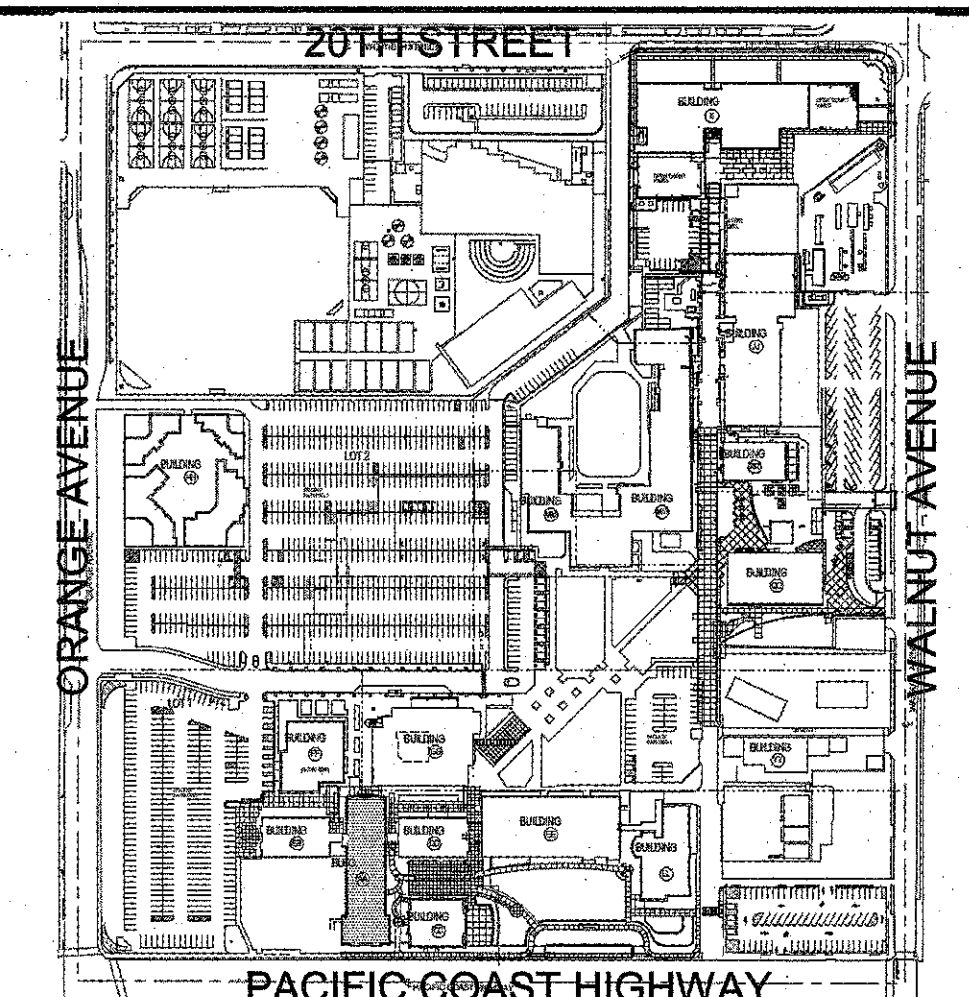
A101-AA

- BD008 VERIFY AND ADJUST (E) DOOR CLOSER TO COMPLY WITH 5 LBS. MAX. FORCE AND CLOSING SPEED REQ'D TO OPERATE PER CODE. WHERE CLOSER IS NOT ADJUSTABLE REPLACE CLOSER AS REQUIRED PER FLOOR PLAN GENERAL NOTES #7
- BD029 CAREFULLY REMOVE (E) ACOUSTICAL SEAL AND KICK PLATE WHERE OCCURS AT BASE OF DOOR. RETURN TO DISTRICT
- BD031 VERIFY AND ADJUST (E) DOOR PANIC HARDWARE TO COMPLY WITH 5 LBS. MAX. FORCE REQ'D TO OPERATE PER CODE. WHERE THE DOOR PANIC HARDWARE IS NOT ADJUSTABLE REPLACE AS REQUIRED
- BD034 REMOVE (E) WARNING STRIPING
- BN024 INSTALL (N) 12" TALL KICK PLATE AT BASE OF DOOR TO BE LOCATED ON THE "PUSH SIDE" OF DOOR. KICK PLATE TO EXTEND FULL WIDTH OF DOOR. SEE DETAIL 20/A801
- BN052 INSTALL (N) CONTRASTING WARNING STRIPS AT TOP STEP AND BOTTOM STEP OF STAIRS SEE DETAIL 5/A800

#### KEYNOTES

- FOR TYPICAL SYMBOLS AND ABBREVIATIONS, SEE SHEET G001.
- ALL GYPSUM BOARD SHALL BE 5/8" THICK TYPE "X" (U.N.O.).
- PROVIDE FIRE-RESISTANT SEALANT MATERIAL AT ALL PENETRATIONS THROUGH FIRE WALLS, FIRE BARRIERS, CORRIDOR WALLS AND RATED HORIZONTAL ASSEMBLIES.
- ALL DIMENSIONS TO WALLS ARE TO FACE OF EXISTING FINISH U.N.O.
- PROTECT AND SAFEGUARD FROM DAMAGE ALL EXISTING FINISHES AND WORK TO REMAIN.
- FOR TYPICAL ROOM SIGNAGE DETAILS SEE 13/A800.
- WHERE DOOR CLOSERS ARE TO BE REPLACED THE NEW MODEL SHALL BE:  
**LCN 4040XP SERIES:**
  - REGULAR OR PARALLEL ARM AS REQUIRED V.I.F.
  - PROVIDE REGULAR ARM FOR CLOSERS MOUNTED ON PULL SIDE (HINGE) OF DOOR.
  - PROVIDE SPRING CLUSH ARM (SCUSH) FOR CLOSERS MOUNTED ON PUSH SIDE (PARALLEL ARM) OF DOOR.
  - PROVIDE MOUNTING ACCESSORIES AS REQUIRED TO COMPLETE INSTALLATION.
  - MATCH MOUNTING CONDITION OF EXISTING CLOSER BEING REPLACED.
- CONTRACTOR TO VERIFY ALL MANUAL FIRE ALARM PULL STATIONS MEET THE HEIGHT REQUIREMENTS OF 16/A800. LOWER ALL EXISTING MANUAL FIRE ALARM PULL STATIONS AS REQUIRED.

#### FLOOR PLAN GENERAL NOTES



- DOOR HARDWARE
- DOOR CLOSER
- SPECIALTY
- CONCRETE/FLOORING
- FLOOR MAT
- DOOR KICK PLATE
- SIGNAGE
- TOILET ACCESSORIES
- FIRE ALARM

CONTRASTING STRIPES AT STAIR CASE TO BE PERFORMED DURING OFF HOURS/WEEKEND.

DELINEATORS TO BE ADDED AS NEEDED. SIGNAGE TO BE PLACED TO REDIRECT TRAFFIC.

WOMENS GANG RESTROOMS WILL BE CLOSED OFF SECOND FLOOR AND THEN FIRST FLOOR.

SIGNAGE TO BE PLACED REDIRECTING TO THE OPEN RESTROOMS.

1. DOOR HARDWARE, CLOSERS, AND KICK PLATES SCOPE OF WORK TO BE COORDINATED WITH THE BMT. SCOPE TO BE PERFORMED ON A DOOR-BY-DOOR BASIS.

BUILDING AA - RENOVATION SECOND FLOOR PLAN

3/32" = 1'-0"

2

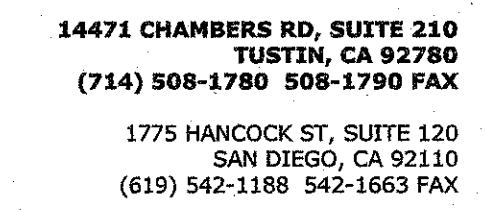
BUILDING AA - DEMOLITION SECOND FLOOR PLAN

3/32" = 1'-0"

1

KEYMAP





PROJECT NAME:

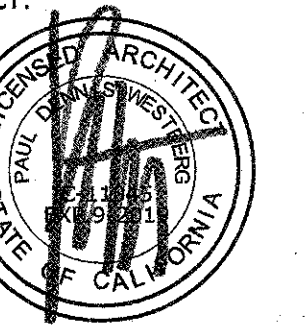
**Long Beach City College**  
**Pacific Coast Campus - Barrier Removal**  
1305 E. Pacific Coast Hwy.,  
Long Beach, California 90806

**LONG BEACH  
COMMUNITY COLLEGE  
DISTRICT**

001 E. Carson St., Long  
Beach, California 90806

[illegible]

NO: 16023  
E: 02/20/2018  
WN: RR / AN  
CK: JG  
HITECT: PDW  
INEER:



**CONSULTANT:** \_\_\_\_\_

TE:

IDENTIFICATION STAMP  
DIV. OF THE STATE ARCHITECT  
OFFICE OF REGULATION SERVICES

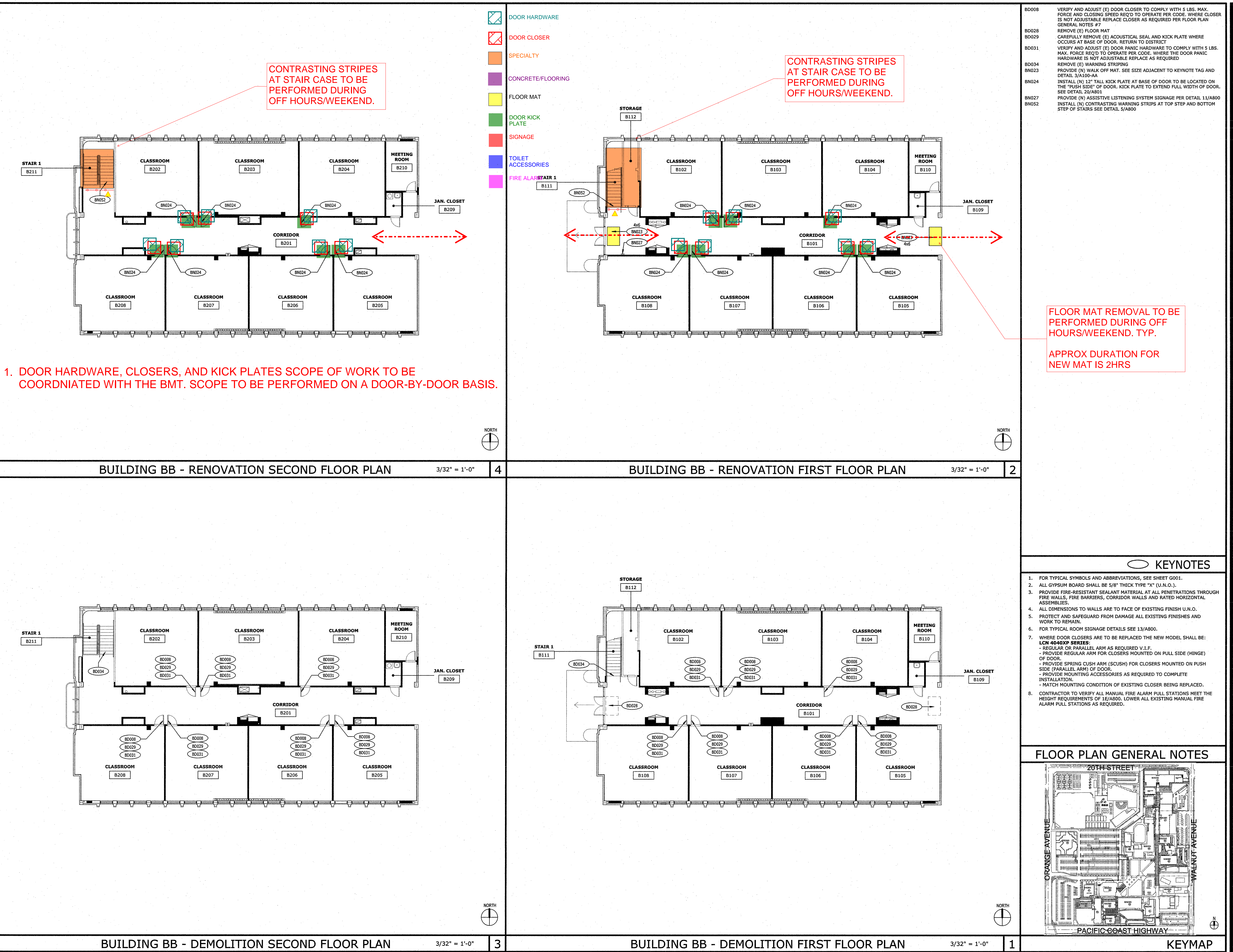
APP NO: 03-118406  
FILE NO: 19-C3

AC *X* FLS *7c* SS *87*  
DATE *FEB 20 2018*

**NET DESCRIPTION:**  
**DEMOLITION/RENOVATED**  
**FLOOR PLAN**

ET NO:

100-BB





CONSULTANT:

PROJECT NAME:

Long Beach City College  
Pacific Coast Campus - Barrier Removal  
1305 E. Pacific Coast Hwy.,  
Long Beach, California 90806

CLIENT:  
LONG BEACH  
COMMUNITY COLLEGE  
DISTRICT  
4901 E. Carson St., Long  
Beach, California 90806

Rev. Date Description

JOB NO: 16023  
DATE: 02/20/2018  
DRAWN: Author  
CHECK: Checker  
ARCHITECT: PDW  
ENGINEER:  
ARCHITECT:

CONSULTANT:

STATE:  
IDENTIFICATION STAMP  
DIV. OF THE STATE ARCHITECT  
OFFICE OF REGULATION SERVICES  
APP NO: 03-118406  
FILE NO: 19-C3  
AC: FLS: SS: 137  
DATE: FEB 20 2018

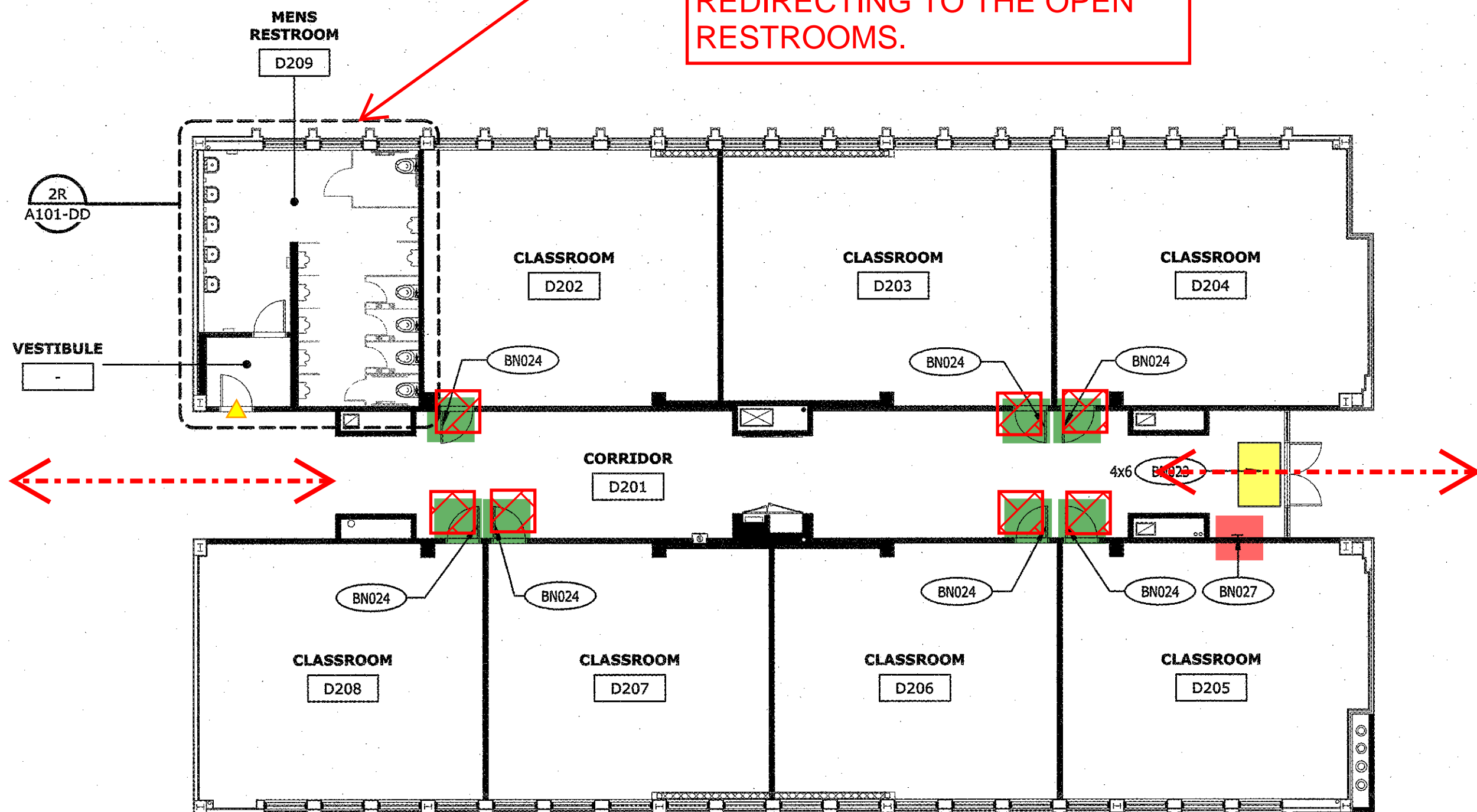
SHEET DESCRIPTION:  
DEMOLITION/RENOVATED  
FLOOR PLAN

SHEET NO:

A100-DD

- DOOR HARDWARE  
DOOR CLOSER  
SPECIALTY  
CONCRETE/FLOORING  
FLOOR MAT  
DOOR KICK PLATE  
SIGNAGE  
TOILET ACCESSORIES  
FIRE ALARM

MENS GANG RESTROOMS WILL  
BE CLOSED OFF SECOND  
FLOOR AND THEN FIRST  
FLOOR.  
SIGNAGE TO BE PLACED  
REDIRECTING TO THE OPEN  
RESTROOMS.



1. DOOR HARDWARE, CLOSERS, AND KICK PLATES SCOPE OF WORK TO BE  
COORDINATED WITH THE BMT. SCOPE TO BE PERFORMED ON A DOOR-BY-DOOR BASIS.

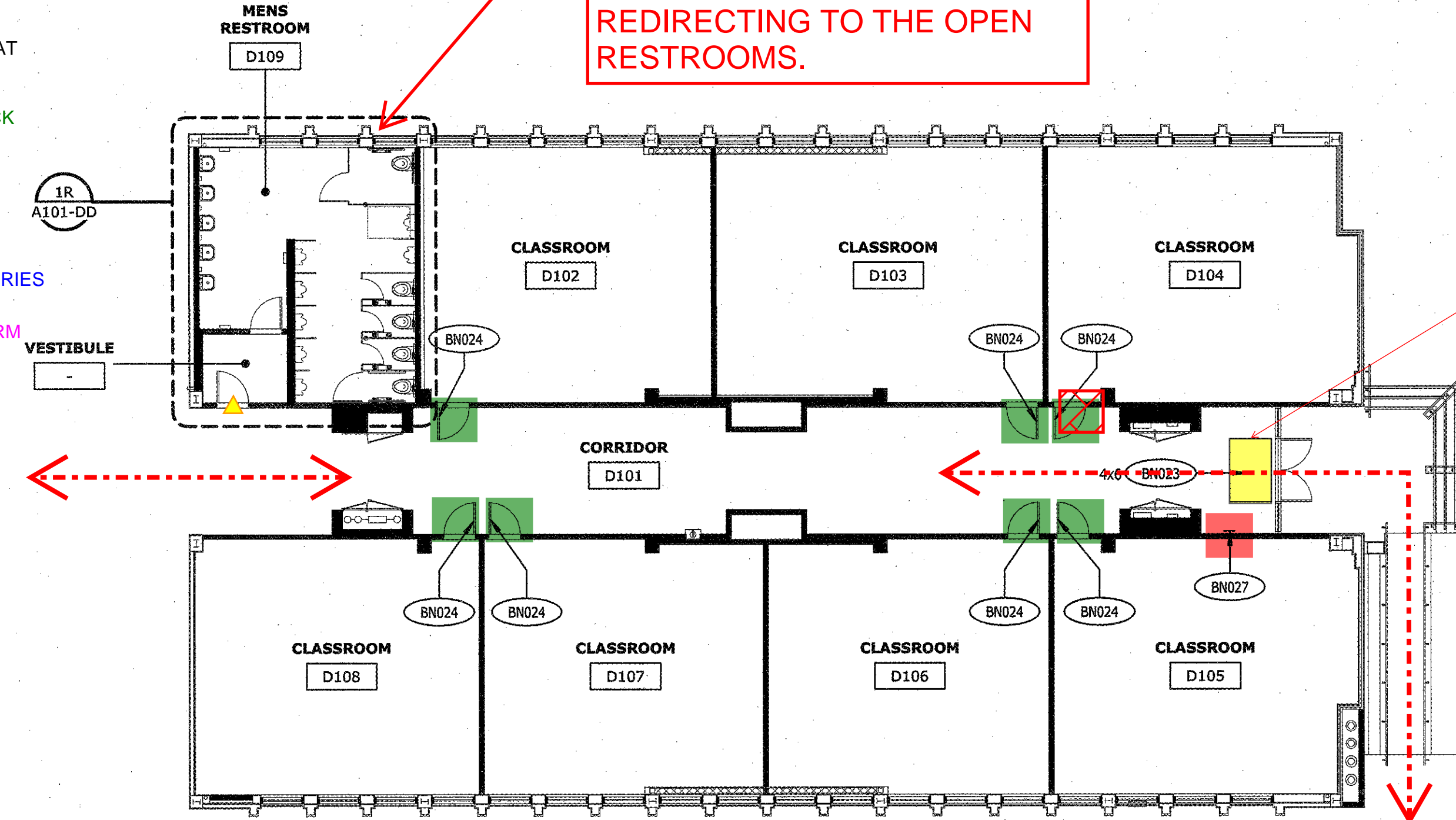


BUILDING DD - RENOVATION SECOND FLOOR PLAN

3/32" = 1'-0"

4

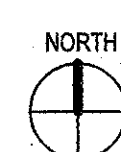
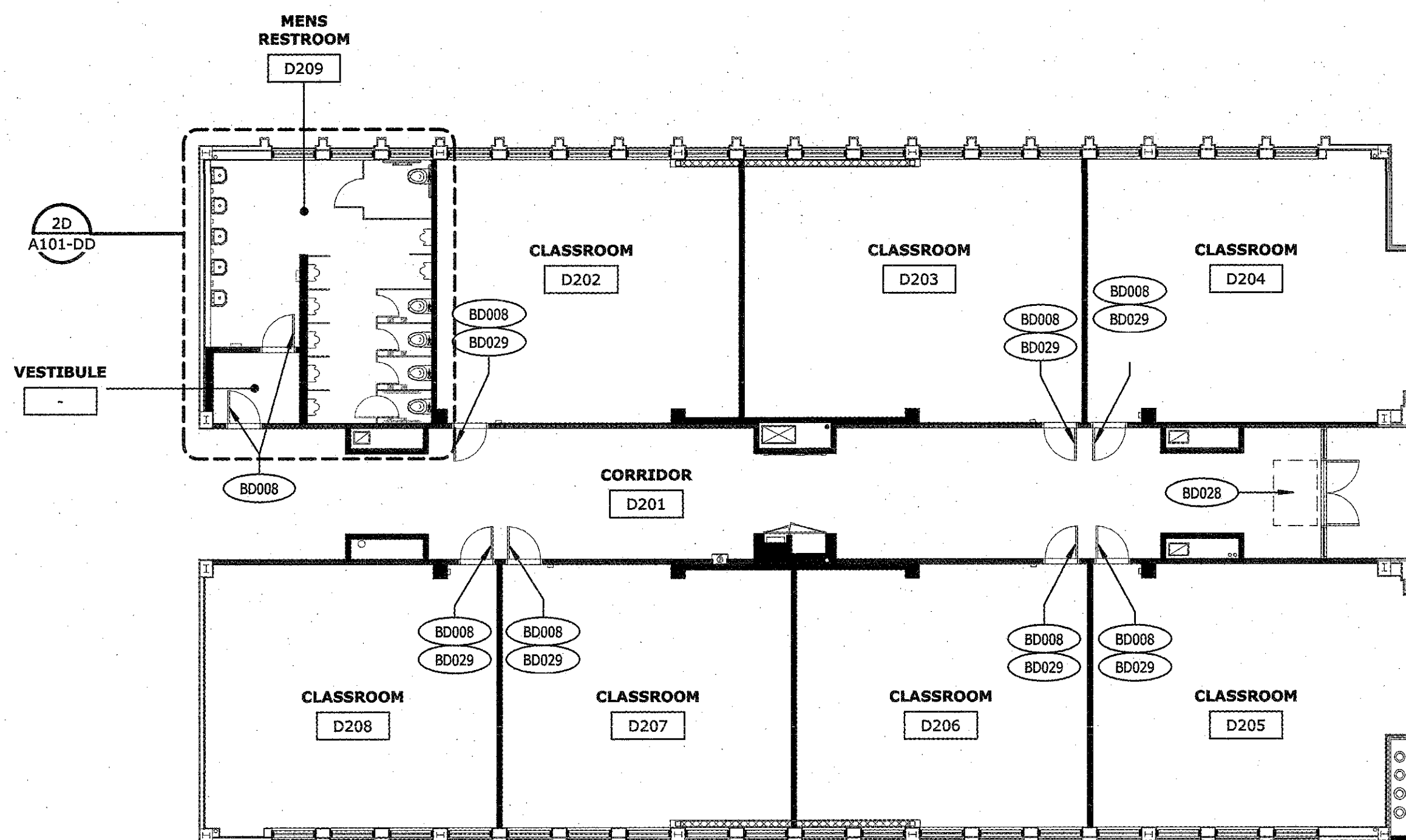
MENS GANG RESTROOMS WILL  
BE CLOSED OFF SECOND  
FLOOR AND THEN FIRST  
FLOOR.  
SIGNAGE TO BE PLACED  
REDIRECTING TO THE OPEN  
RESTROOMS.



BUILDING DD - RENOVATION FIRST FLOOR PLAN

3/32" = 1'-0"

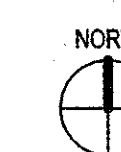
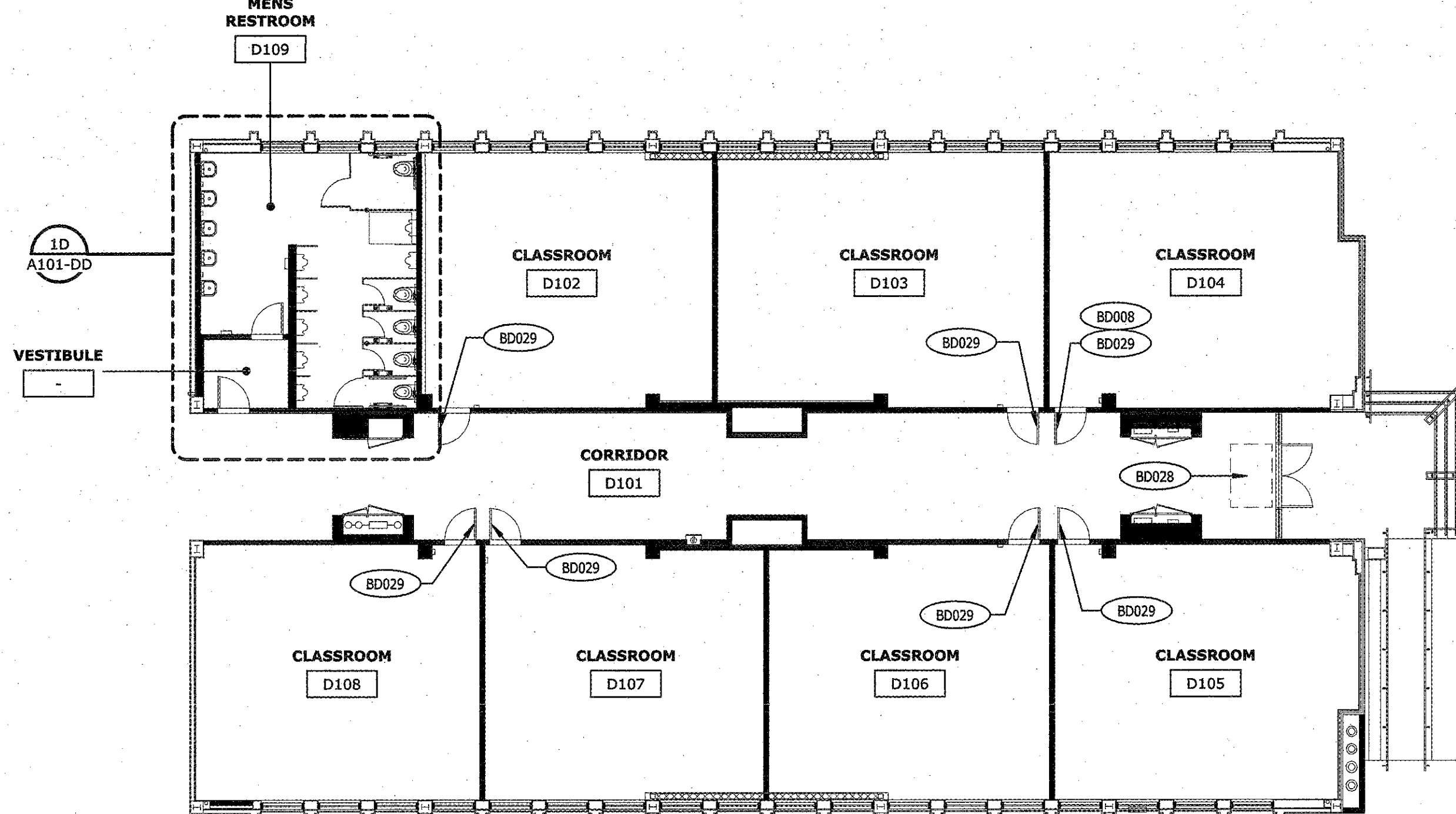
2



BUILDING DD - DEMOLITION SECOND FLOOR PLAN

3/32" = 1'-0"

3



BUILDING DD - DEMOLITION FIRST FLOOR PLAN

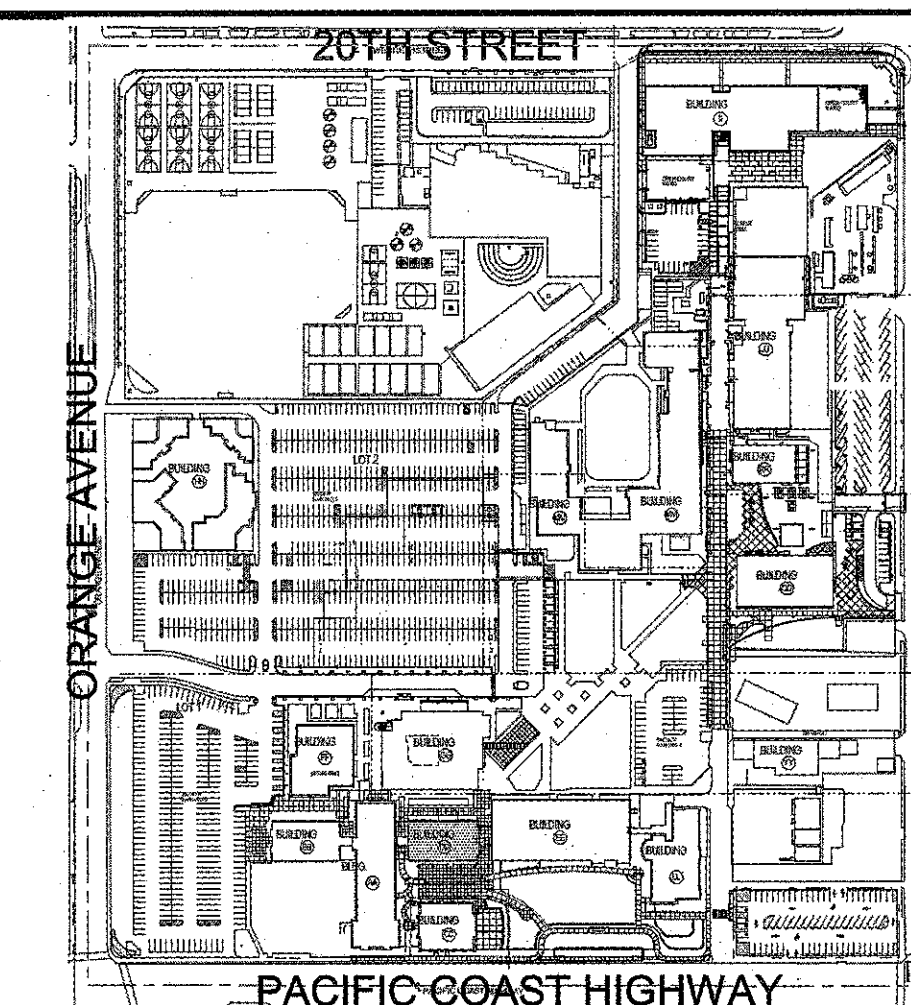
3/32" = 1'-0"

1

KEYNOTES

- FOR TYPICAL SYMBOLS AND ABBREVIATIONS, SEE SHEET G001.
- ALL GYPSUM BOARD SHALL BE 5/8" THICK TYPE "X" (U.N.O.).
- PROVIDE FIRE-RESISTANT SEALANT MATERIAL AT ALL PENETRATIONS THROUGH FIRE WALLS, FIRE BARRIERS, CORRIDOR WALLS AND RATED HORIZONTAL ASSEMBLIES.
- ALL DIMENSIONS TO WALLS ARE TO FACE OF EXISTING FINISH U.N.O.
- PROTECT AND SAFEGUARD FROM DAMAGE ALL EXISTING FINISHES AND WORK TO REMAIN.
- FOR TYPICAL ROOM SIGNAGE DETAILS SEE 13/A800.
- WHERE DOOR CLOSERS ARE TO BE REPLACED THE NEW MODEL SHALL BE:  
LCN 4040XP SERIES:  
- REGULAR OR PARALLEL ARM AS REQUIRED V.I.F.  
- PROVIDE REGULAR ARM FOR CLOSERS MOUNTED ON PULL SIDE (HINGE) OF DOOR.  
- PROVIDE SPRING CUSH ARM (SCUSH) FOR CLOSERS MOUNTED ON PUSH SIDE (PARALLEL ARM) OF DOOR.  
- PROVIDE MOUNTING ACCESSORIES AS REQUIRED TO COMPLETE INSTALLATION.  
- MATCH MOUNTING CONDITION OF EXISTING CLOSER BEING REPLACED.
- CONTRACTOR TO VERIFY ALL MANUAL FIRE ALARM PULL STATIONS MEET THE HEIGHT REQUIREMENTS OF 1E/A800. LOWER ALL EXISTING MANUAL FIRE ALARM PULL STATIONS AS REQUIRED.

FLOOR PLAN GENERAL NOTES

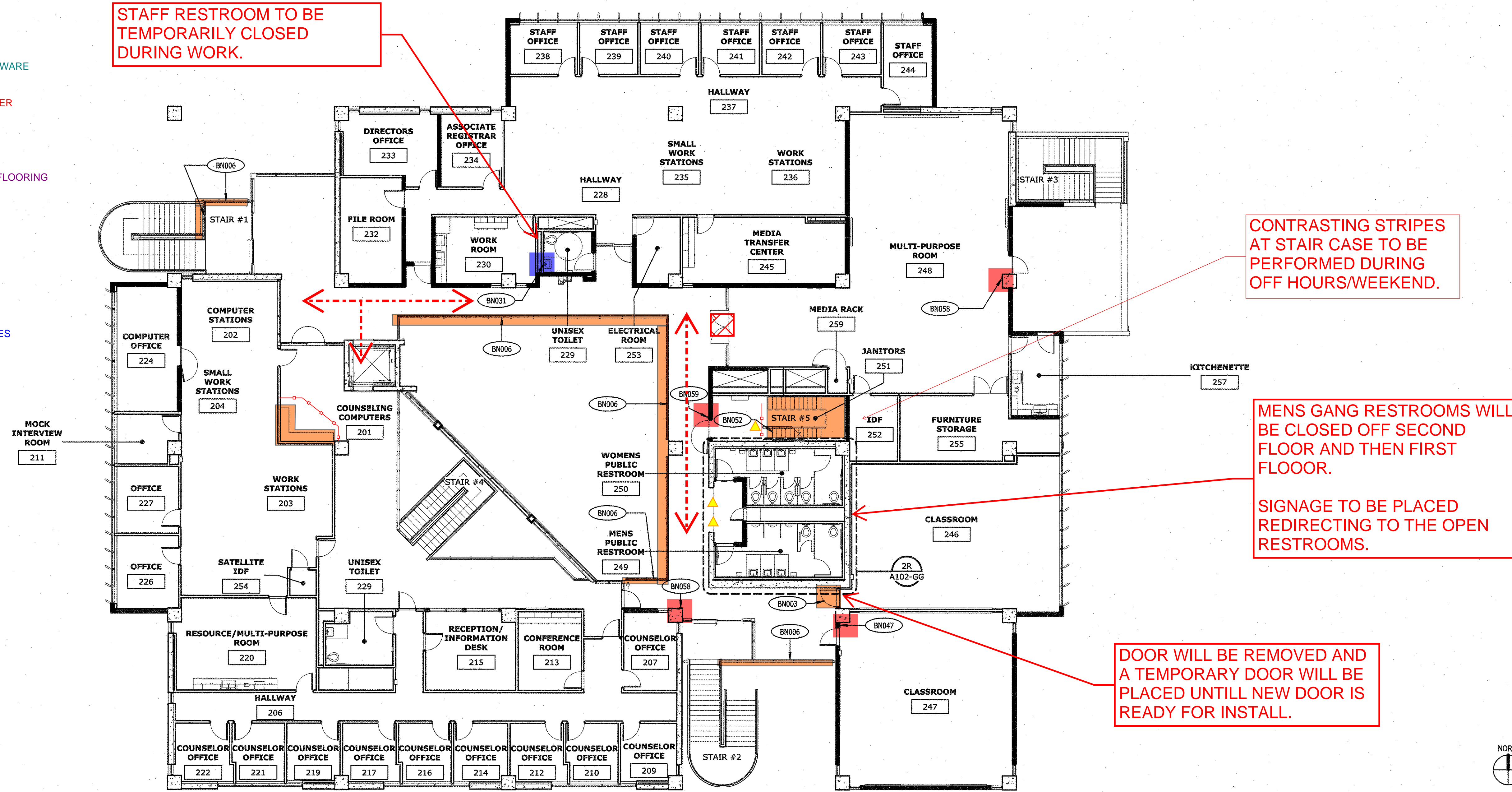








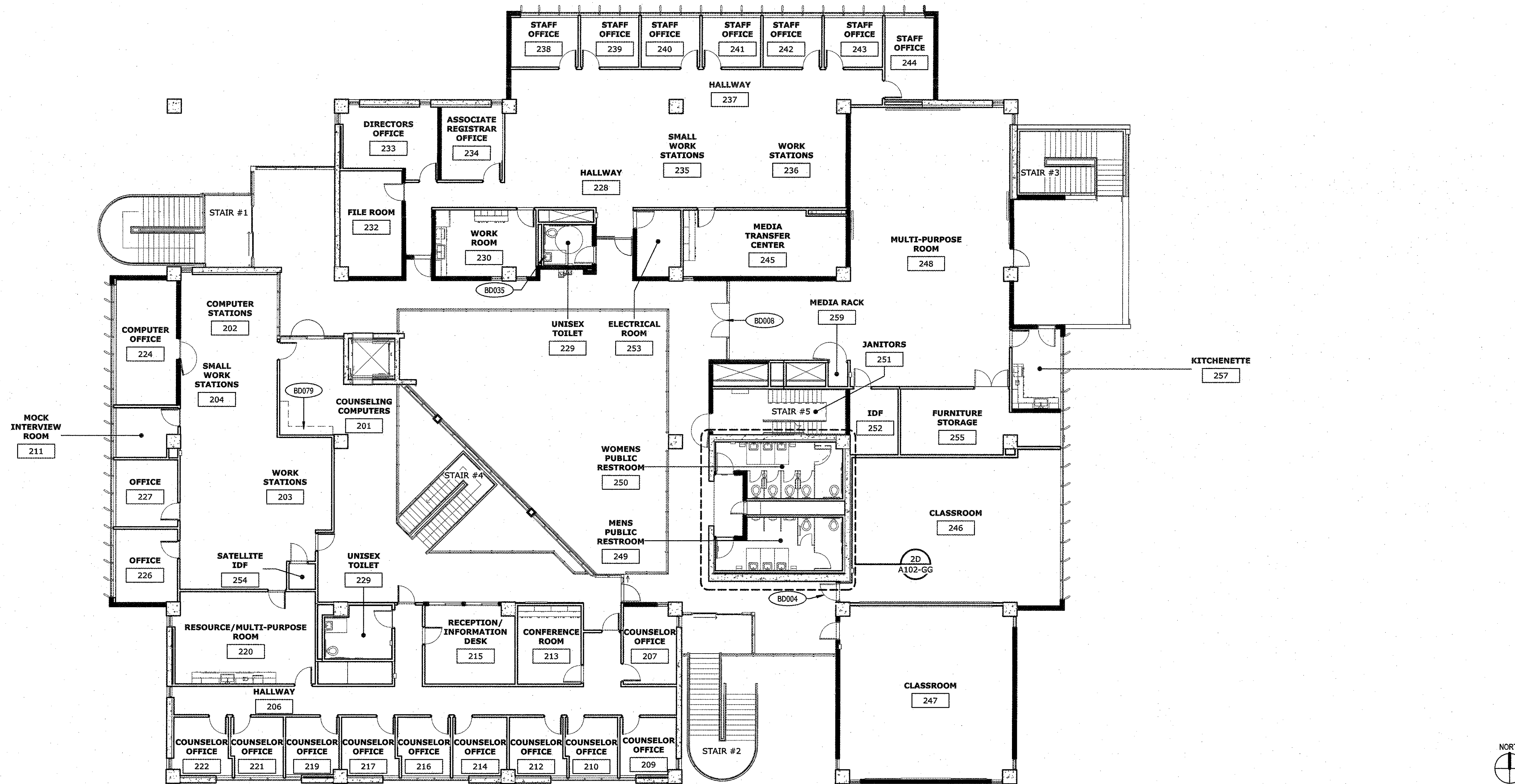
- DOOR HARDWARE  
DOOR CLOSER  
SPECIALTY  
CONCRETE/FLOORING  
FLOOR MAT  
DOOR KICK PLATE  
SIGNAGE  
TOILET ACCESSORIES  
FIRE ALARM



BUILDING GG - RENOVATION SECOND FLOOR PLAN

3/32" = 1'-0"

2



BUILDING GG - DEMOLITION SECOND FLOOR PLAN

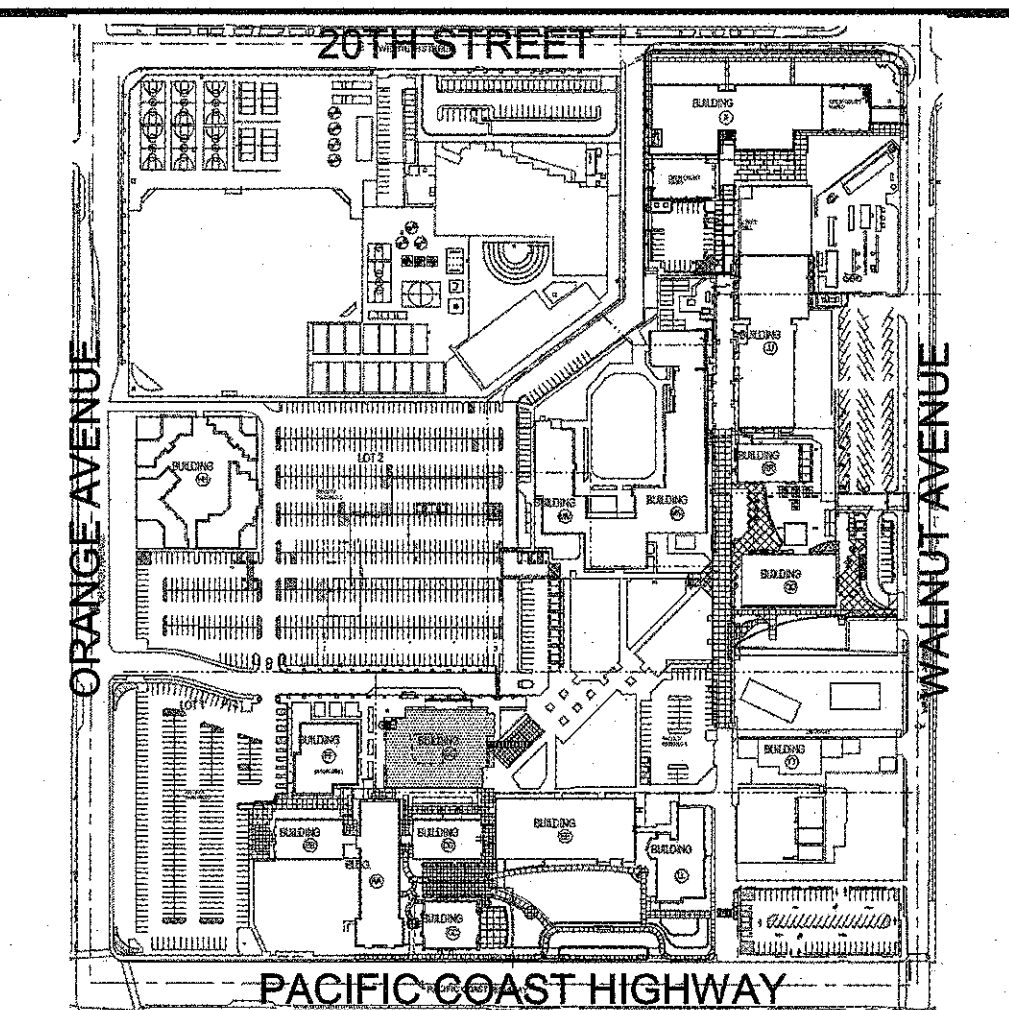
3/32" = 1'-0"

1

KEYNOTES

- FOR TYPICAL SYMBOLS AND ABBREVIATIONS, SEE SHEET G001.
- ALL GYPSUM BOARD SHALL BE 5/8" THICK TYPE "X" (U.N.O.).
- PROVIDE FIRE-RESISTANT SEALANT MATERIAL AT ALL PENETRATIONS THROUGH FIRE WALLS, FIRE BARRIERS, CORRIDOR WALLS AND RATED HORIZONTAL ASSEMBLIES.
- ALL DIMENSIONS TO WALLS ARE TO FACE OF EXISTING FINISH U.N.O.
- PROTECT AND SAFEGUARD FROM DAMAGE ALL EXISTING FINISHES AND WORK TO REMAIN.
- FOR TYPICAL ROOM SIGNAGE DETAILS SEE 13/A800.
- WHERE DOOR CLOSERS ARE TO BE REPLACED THE NEW MODEL SHALL BE:  
LCN 4040XP SERIES:  
- REGULAR OR PARALLEL ARM AS REQUIRED V.I.F.  
- PROVIDE REGULAR ARM FOR CLOSERS MOUNTED ON PULL SIDE (HINGE) OF DOOR.  
- PROVIDE SPRING CUSH ARM (SCUSH) FOR CLOSERS MOUNTED ON PUSH SIDE (PARALLEL ARM) OF DOOR.  
- PROVIDE MOUNTING ACCESSORIES AS REQUIRED TO COMPLETE INSTALLATION.  
- MATCH MOUNTING CONDITION OF EXISTING CLOSER BEING REPLACED.
- CONTRACTOR TO VERIFY ALL MANUAL FIRE ALARM PULL STATIONS MEET THE HEIGHT REQUIREMENTS OF 1E/A800. LOWER ALL EXISTING MANUAL FIRE ALARM PULL STATIONS AS REQUIRED.

FLOOR PLAN GENERAL NOTES



KEYMAP

CONSULTANT:

PROJECT NAME:

Long Beach City College  
Pacific Coast Campus - Barrier Removal  
1305 E. Pacific Coast Hwy.,  
Long Beach, California 90806

CLIENT:  
LONG BEACH  
COMMUNITY COLLEGE  
DISTRICT

4901 E. Carson St., Long  
Beach, California 90806

Rev. Date Description

JOB NO: 16023

DATE: 02/20/2018

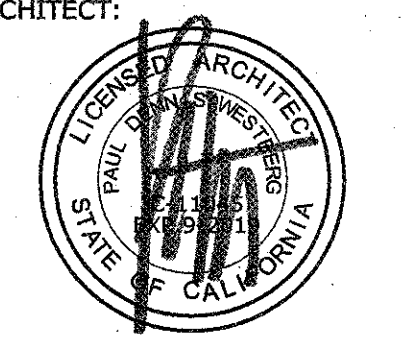
DRAWN: Author

CHECK: Checker

ARCHITECT: PDW

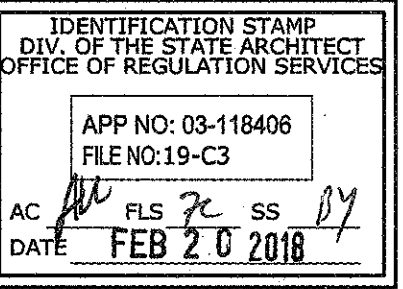
ENGINEER:

ARCHITECT:



CONSULTANT:

STATE:



SHEET DESCRIPTION:  
DEMOLITION/RENOVATED  
SECOND FLOOR PLAN

SHEET NO:

A101-GG